

RNLS RABBIT PAB

Cat.#: S220851

Product Name: Anti-RNLS Rabbit Polyclonal Antibody

Synonyms: C10orf59; RENALASE

UNIPROT ID: Q5VYX0 (Gene Accession - NP_001026879)

Background: Renalase is a flavin adenine dinucleotide-dependent amine oxidase that is secreted into the blood from the kidney.

Immunogen: Synthetic peptide of human RNLS

Applications: ELISA, WB, IHC

Recommended Dilutions: IHC: 50-200;WB: 500-2000;ELISA: 5000-10000

Host Species: Rabbit

Clonality: Rabbit Polyclonal

Isotype: Immunogen-specific rabbit IgG

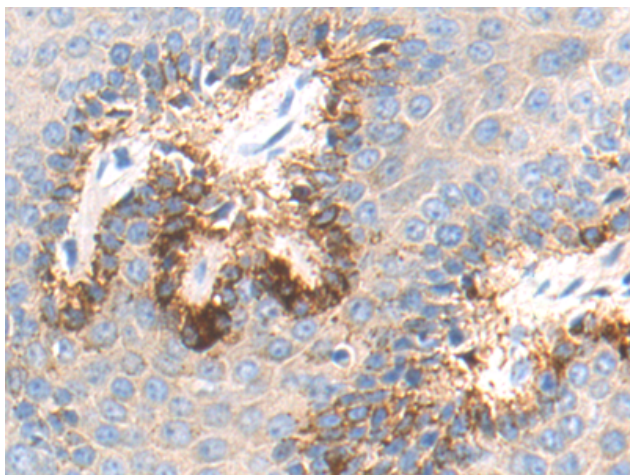
Purification: Antigen affinity purification

Species Reactivity: Human, Mouse, Rat

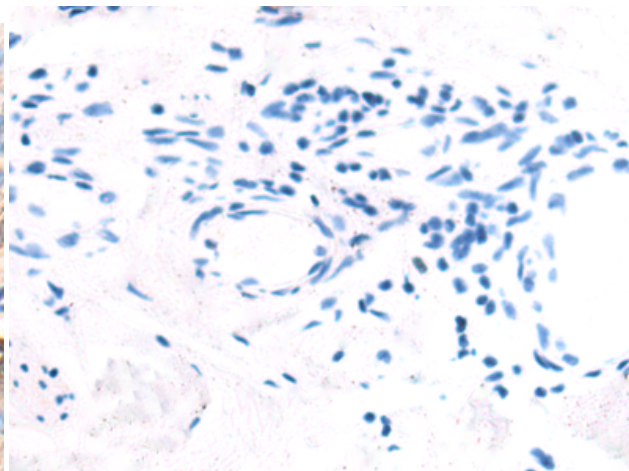
Constituents: PBS (without Mg²⁺ and Ca²⁺), pH 7.4, 150 mM NaCl, 0.05% Sodium Azide and 40% glycerol

Research Areas: Neuroscience, Cardiovascular

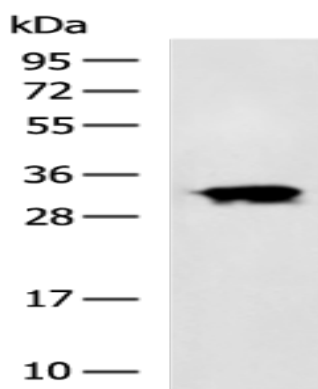
Storage & Shipping: Store at -20°C. Avoid repeated freezing and thawing



Immunohistochemistry analysis of paraffin embedded Human breast cancer tissue using 220851(RNLS Antibody) at a dilution of 1/55(Secreted).



In comparison with the IHC on the left, the same paraffin-embedded Human breast cancer tissue is first treated with the synthetic peptide and then with 220851(Anti-RNLS Antibody) at dilution 1/55.



Gel: 12%SDS-PAGE, Lysate: 40 μ g;
Lane: K562 cell lysate;
Primary antibody: 220851(RNLS Antibody) at dilution 1/800;
Secondary antibody: HRP-conjugated Goat anti rabbit IgG at 1/5000 dilution;
Exposure time: 2 minutes