

## RO60 RABBIT PAB

**Cat.#:** S211594

**Product Name:** Anti-RO60 Rabbit Polyclonal Antibody

**Synonyms:** SSA2; RORNP; TROVE2

**UNIPROT ID:** P10155 (Gene Accession - BC036658 )

**Background:** RNA-binding protein that binds to misfolded non-coding RNAs, pre-5S rRNA, and several small cytoplasmic RNA molecules known as Y RNAs. May stabilize some of these RNAs and protect them from degradation (PubMed:18056422). Binds to endogenous Alu retroelements which are induced by type I interferon and stimulate porinflammatoxy cytokine secretion. Regulates the expression of Alu retroelements as well as inflammatory genes (PubMed:26382853). May play roles in cilia formation and/or maintenance.

**Immunogen:** Fusion protein of human RO60

**Applications:** ELISA, IHC

**Recommended Dilutions:** IHC: 50-200; ELISA: 2000-5000

**Host Species:** Rabbit

**Clonality:** Rabbit Polyclonal

**Isotype:** Immunogen-specific rabbit IgG

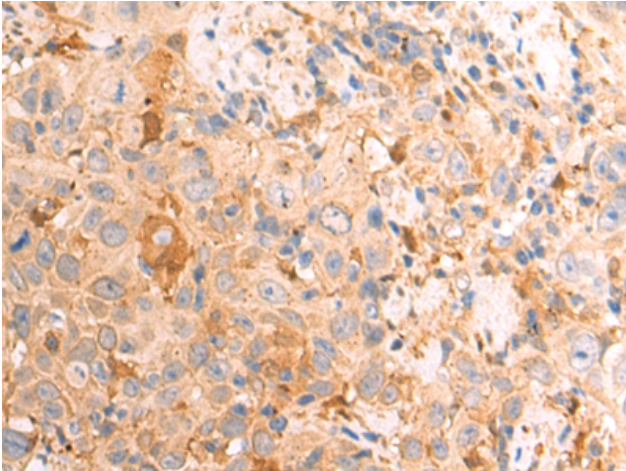
**Purification:** Antigen affinity purification

**Species Reactivity:** Human, Mouse

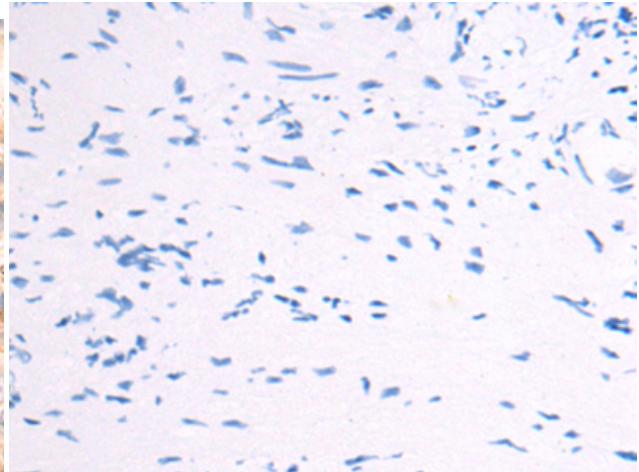
**Constituents:** PBS (without Mg<sup>2+</sup> and Ca<sup>2+</sup>), pH 7.4, 150 mM NaCl, 0.05% Sodium Azide and 40% glycerol

**Research Areas:** Immunology, Epigenetics and Nuclear Signaling

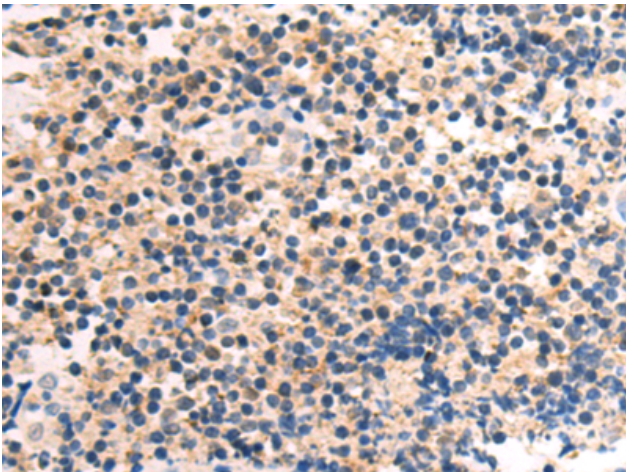
**Storage & Shipping:** Store at -20°C. Avoid repeated freezing and thawing



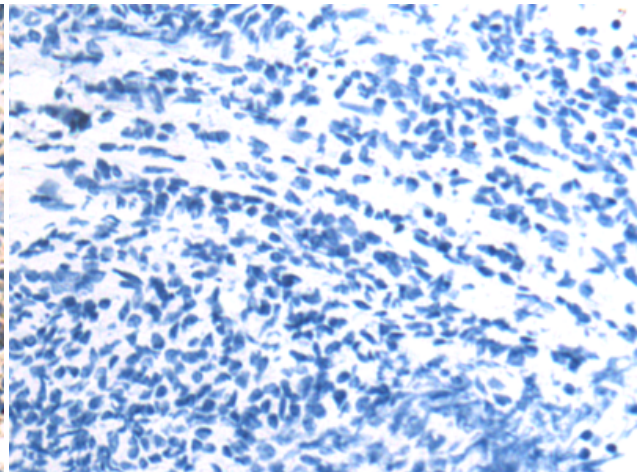
Immunohistochemistry analysis of paraffin embedded Human prostate cancer tissue using 211594(RO60 Antibody) at a dilution of 1/50(Cytoplasm).



In comparison with the IHC on the left, the same paraffin-embedded Human prostate cancer tissue is first treated with the fusion protein and then with 211594(Anti-RO60 Antibody) at dilution 1/50.



The image on the left is immunohistochemistry of paraffin-embedded Human tonsil tissue using 211594(Anti-RO60 Antibody) at a dilution of 1/50.



In comparison with the IHC on the left, the same paraffin-embedded Human tonsil tissue is first treated with fusion protein and then with D123228(Anti-RO60 Antibody) at dilution 1/50.