

ROCK1 RABBIT MAB

Cat.#: N262843

Product Name: Anti-ROCK1 Rabbit Monoclonal Antibody

Synonyms: ROCK1; Rho-associated protein kinase 1; Renal carcinoma antigen NY-REN-35; Rho-associated; coiled-coil-containing protein kinase 1; Rho-associated; coiled-coil-containing protein kinase I; ROCK-I; p160 ROCK-1; p160ROCK

UNIPROT ID: Q13464

Background: ROCK1 Protein kinase which is a key regulator of actin cytoskeleton and cell polarity. Involved in regulation of smooth muscle contraction, actin cytoskeleton organization, stress fiber and focal adhesion formation, neurite retraction, cell adhesion and motility via phosphorylation of DAPK3, GFAP, LIMK1, LIMK2, MYL9/MLC2, PFN1 and PPP1R12A. Phosphorylates FHOD1 and acts synergistically with it to promote SRC-dependent non-apoptotic plasma membrane blebbing.

Immunogen: A synthetic peptide of human ROCK1

Applications: WB,IP

Recommended Dilutions: WB: 1/500-1/1000 IP: 1/20

Host Species: Rabbit

Clonality: Rabbit Monoclonal

Clone ID: R09-3D3

MW: Calculated MW: 158 kDa; Observed MW: 158 kDa

Isotype: IgG

Purification: Affinity Purified

Species Reactivity: Human,Mouse,Rat

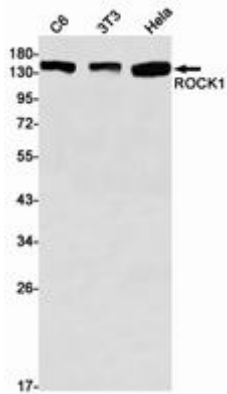
Conjugation: Unconjugated

Modification: Unmodified

Constituents: PBS (without Mg²⁺ and Ca²⁺), pH 7.3 containing 50% glycerol, 0.5% BSA and 0.02% sodium azide

Research Areas: apoptosis - Caspase family

Storage & Shipping: Store at -20°C. Avoid repeated freezing and thawing



Western blot analysis of ROCK1 in C6, 3T3, HeLa lysates using ROCK1 antibody.