

## ROCK2 RABBIT MAB

**Cat.#:** N261595

**Product Name:** Anti-ROCK2 Rabbit Monoclonal Antibody

**Synonyms:** p164 ROCK 2; Rho kinase 2; ROCK 2; Rock II; Rock2m; ROK alpha; ROKalpha

**UNIPROT ID:** O75116

**Background:** Regulates the assembly of the actin cytoskeleton. Promotes formation of stress fibers and of focal adhesion complexes. Plays a role in smooth muscle contraction.

**Immunogen:** A synthetic peptide of human ROCK2

**Applications:** WB, ICC/IF

**Recommended Dilutions:** WB: 1/500-1/1000 IF: 1/50-1/200

**Host Species:** Rabbit

**Clonality:** Rabbit Monoclonal

**Clone ID:** R01-4F1

**MW:** Calculated MW: 161 kDa; Observed MW: 161 kDa

**Isotype:** IgG

**Purification:** Affinity Purified

**Species Reactivity:** Human, Rat

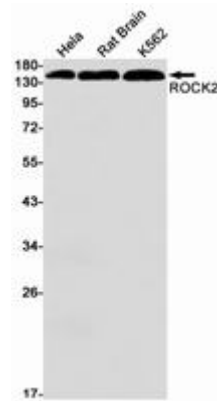
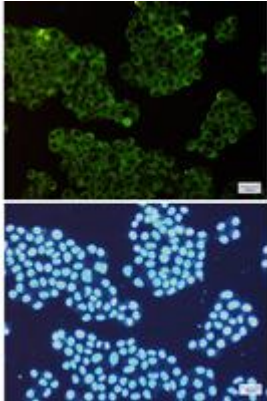
**Conjugation:** Unconjugated

**Modification:** Unmodified

**Constituents:** PBS (without Mg<sup>2+</sup> and Ca<sup>2+</sup>), pH 7.3 containing 50% glycerol, 0.5% BSA and 0.02% sodium azide

**Research Areas:** apoptosis - Caspase family

**Storage & Shipping:** Store at -20°C. Avoid repeated freezing and thawing



Immunocytochemistry analysis of ROCK2 (green) in HeLa using ROCK2 antibody, and DAPI (blue)

Western blot analysis of ROCK2 in HeLa, rat Brain, K562 lysates using ROCK2 antibody.