

## ROCK2 RABBIT PAB

**Cat.#:** N225860

**Product Name:** Anti-ROCK2 Rabbit pAb

**Synonyms:** p164 ROCK 2; Rho kinase 2; ROCK 2; Rock II; Rock2m; ROK alpha; ROKalpha

**UNIPROT ID:** O75116

**Background:** Regulates the assembly of the actin cytoskeleton. Promotes formation of stress fibers and of focal adhesion complexes. Plays a role in smooth muscle contraction.

**Immunogen:** A synthesized peptide derived from human ROCK2

**Applications:** WB, ICC/IF

**Recommended Dilutions:** WB: 1/500-1/1000 IF: 1/50-1/200

**Host Species:** Rabbit

**Clonality:** Rabbit Polyclonal

**Clone ID:** -

**MW:** Calculated MW: 161 kDa; Observed MW: 161 kDa

**Isotype:** IgG

**Purification:** Affinity Chromatography

**Species Reactivity:** Human, Mouse, Rat

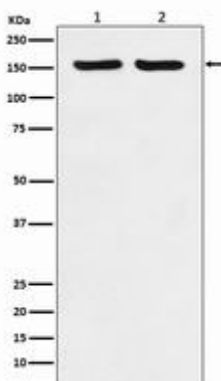
**Conjugation:** Unconjugated

**Modification:** Unmodified

**Constituents:** PBS (without Mg<sup>2+</sup> and Ca<sup>2+</sup>), pH 7.3 containing 50% glycerol, 0.5% BSA and 0.02% sodium azide

**Research Areas:** Cell Biology

**Storage & Shipping:** Store at -20°C. Avoid repeated freezing and thawing



Western blot analysis of ROCK2 in (1) Hela lysates; (2) RAW264.7 lysates using ROCK2 antibody.



# Product Description

Pioneering GTPase and Oncogene Product Development since 2010

---