

RPA2 RABBIT PAB

Cat.#: S217780

Product Name: Anti-RPA2 Rabbit Polyclonal Antibody

Synonyms: REPA2; RPA32; RP-A p32; RP-A p34

UNIPROT ID: P15927 (Gene Accession - BC001630)

Background: Replication protein A 32 kDa subunit is a protein that in humans is encoded by the RPA2 gene. As part of the heterotrimeric replication protein A complex (RPA/RP-A), binds and stabilizes single-stranded DNA intermediates, that form during DNA replication or upon DNA stress. It prevents their reannealing and in parallel, recruits and activates different proteins and complexes involved in DNA metabolism. Thereby, it plays an essential role both in DNA replication and the cellular response to DNA damage.

Immunogen: Full length fusion protein

Applications: ELISA, WB, IHC

Recommended Dilutions: IHC: 30-150;WB: 500-2000;ELISA: 2000-5000

Host Species: Rabbit

Clonality: Rabbit Polyclonal

Isotype: Immunogen-specific rabbit IgG

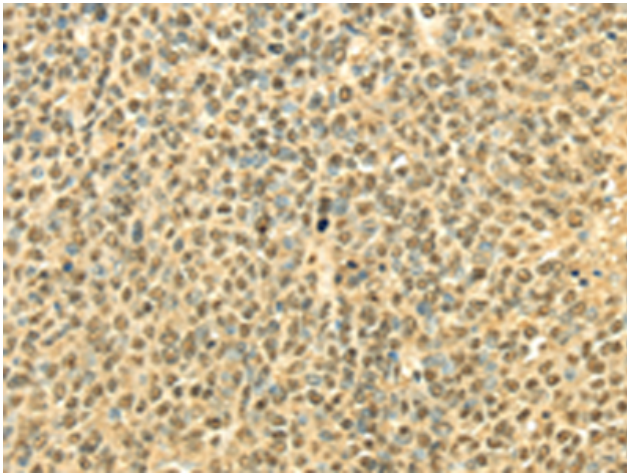
Purification: Antigen affinity purification

Species Reactivity: Human

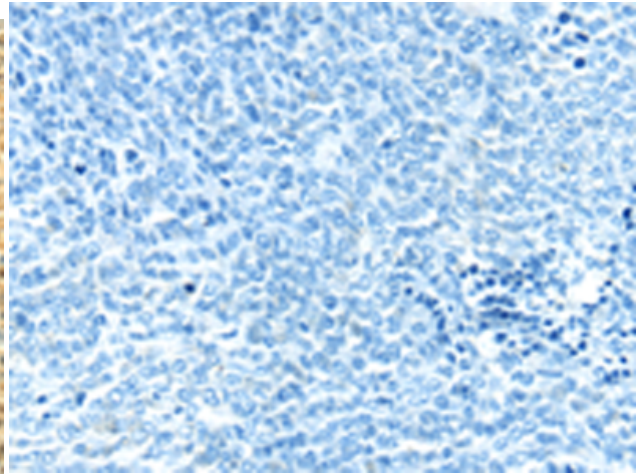
Constituents: PBS (without Mg²⁺ and Ca²⁺), pH 7.4, 150 mM NaCl, 0.05% Sodium Azide and 40% glycerol

Research Areas: Epigenetics and Nuclear Signaling

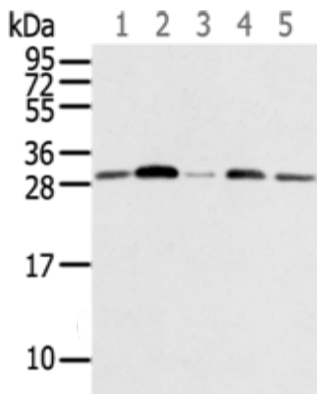
Storage & Shipping: Store at -20°C. Avoid repeated freezing and thawing



Immunohistochemistry analysis of paraffin embedded Human ovarian cancer tissue using 217780(RPA2 Antibody) at a dilution of 1/40(Nucleus and Cytoplasm).



In comparison with the IHC on the left, the same paraffin-embedded Human ovarian cancer tissue is first treated with the fusion protein and then with 217780(Anti-RPA2 Antibody) at dilution 1/40.



Gel: 12%SDS-PAGE, Lysate: 40 µg;
 Lane 1-5: 231 cells, Jurkat cells, A549 cells, HUVEC cells, Hela cells;
 Primary antibody: 217780(RPA2 Antibody) at dilution 1/600;
 Secondary antibody: Goat anti rabbit IgG at 1/8000 dilution;
 Exposure time: 10 seconds