

RPA3 RABBIT PAB

Cat.#: N225217

Product Name: Anti-RPA3 Rabbit pAb

Synonyms: Replication protein A 14 kDa subunit (RP-A p14; Replication factor A protein 3; RF-A protein 3)

UNIPROT ID: P35244

Background: As part of the heterotrimeric replication protein A complex (RPA/RP-A), binds and stabilizes single-stranded DNA intermediates that form during DNA replication or upon DNA stress.

Immunogen: Synthetic peptide from human protein at AA range: 30-80

Applications: WB,ELISA

Recommended Dilutions: WB: 1/500-1/1000 ELISA: 1/10000

Host Species: Rabbit

Clonality: Rabbit Polyclonal

Clone ID: -

MW: Calculated MW: 14 kDa; Observed MW: 14 kDa

Isotype: IgG

Purification: Affinity Purified

Species Reactivity: Human,Mouse

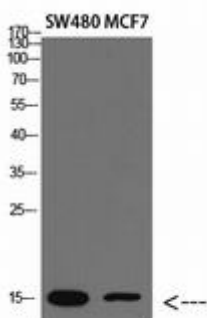
Conjugation: Unconjugated

Modification: Unmodified

Constituents: PBS (without Mg²⁺ and Ca²⁺), pH 7.3 containing 50% glycerol, 0.5% BSA and 0.02% sodium azide

Research Areas: Epigenetics and Nuclear Signaling

Storage & Shipping: Store at -20°C. Avoid repeated freezing and thawing



Western blot analysis of RPA3 in SW480, MCF-7 lysates using RPA3 antibody.



Product Description

Pioneering GTPase and Oncogene Product Development since 2010
