

RPA32 RABBIT MAB

Cat.#: N262844

Product Name: Anti-RPA32 Rabbit Monoclonal Antibody

Synonyms: 60S acidic ribosomal protein P1; AA409079; AI325195; AU020965; HSSB; ik:tdsubc_2g1; M(2)21C; MGC137236; OTTHUMP00000004008; p32; p34; RCJMB04_6d17 replication protein A2; 32kDa; REPA 2; REPA1; REPA2; Replication factor A protein 2; Replication protein A 32 kDa subunit; Replication protein A 32kDa subunit; Replication protein A 34 kDa subunit; Replication protein A; replication protein A1 (70kD); Replication Protein A2 (32kDa); Replication protein A2 32kD; Replication protein A2 32kDa; Replication protein A2; Replication protein A2; 32kDa; RF A; RF-A protein 2; Rf-A2; RFA; RFA2_HUMAN; RP A; RP-A p32; RP-A p34; RP21C; RPA 2; RPA 32; RPA; RPA2; RPA32; RPA34; RPA70; RplP1; RpP2; xx:tdsubc_2g1; zgc:109822.

UNIPROT ID: P15927

Background: As part of the heterotrimeric replication protein A complex (RPA/RP-A), binds and stabilizes single-stranded DNA intermediates, that form during DNA replication or upon DNA stress. It prevents their reannealing and in parallel, recruits and activates different proteins and complexes involved in DNA metabolism. Thereby, it plays an essential role both in DNA replication and the cellular response to DNA damage. In the cellular response to DNA damage, the RPA complex controls DNA repair and DNA damage checkpoint activation.

Immunogen: A synthetic peptide of human RPA32/RPA2

Applications: WB,IHC-P,IP

Recommended Dilutions: WB: 1/500-1/1000 IHC: 1/50-1/100 IP: 1/20

Host Species: Rabbit

Clonality: Rabbit Monoclonal

Clone ID: R07-4D1

MW: Calculated MW: 29 kDa; Observed MW: 29 kDa

Isotype: IgG

Purification: Affinity Purified

Species Reactivity: Human,Mouse,Rat,Hamster

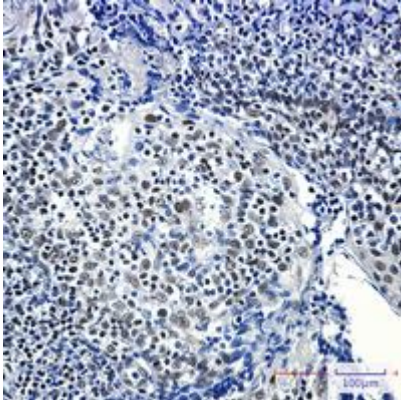
Conjugation: Unconjugated

Modification: Unmodified

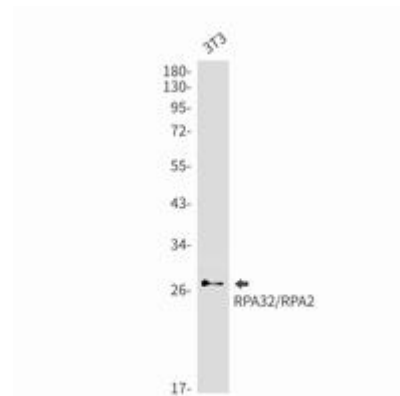
Constituents: PBS (without Mg²⁺ and Ca²⁺), pH 7.3 containing 50% glycerol, 0.5% BSA and 0.02% sodium azide

Research Areas: Epigenetics and Nuclear Signaling

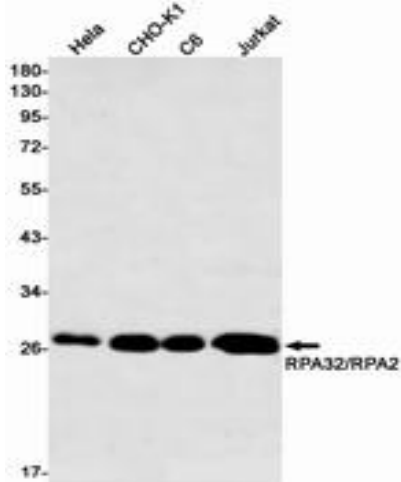
Storage & Shipping: Store at -20°C . Avoid repeated freezing and thawing



Immunohistochemistry analysis of paraffin-embedded Human tonsil using RPA32/RPA2 antibody. High-pressure and temperature Sodium Citrate pH 6.0 was used for antigen retrieval.



Western blot analysis of RPA32/RPA2 in 3T3 lysates using RPA32 antibody.



Western blot analysis of RPA32/RPA2 in HeLa, CHO-K1, C6, Jurkat lysates using RPA32/RPA2 antibody.