

## RPL13 RABBIT PAB

**Cat.#:** S219014

**Product Name:** Anti-RPL13 Rabbit Polyclonal Antibody

**Synonyms:** L13; BBC1; D16S44E; D16S444E

**UNIPROT ID:** P26373 (Gene Accession - BC004954 )

**Background:** Ribosomes, the organelles that catalyze protein synthesis, consist of a small 40S subunit and a large 60S subunit. Together these subunits are composed of 4 RNA species and approximately 80 structurally distinct proteins. This gene encodes a ribosomal protein that is a component of the 60S subunit. The protein belongs to the L13E family of ribosomal proteins. It is located in the cytoplasm. This gene is expressed at significantly higher levels in benign breast lesions than in breast carcinomas. Alternatively spliced transcript variants encoding distinct isoforms have been found for this gene. As is typical for genes encoding ribosomal proteins, there are multiple processed pseudogenes of this gene dispersed through the genome.

**Immunogen:** Fusion protein of human RPL13

**Applications:** ELISA, WB, IHC

**Recommended Dilutions:** IHC: 100-200;WB: 500-2000;ELISA: 5000-10000

**Host Species:** Rabbit

**Clonality:** Rabbit Polyclonal

**Isotype:** Immunogen-specific rabbit IgG

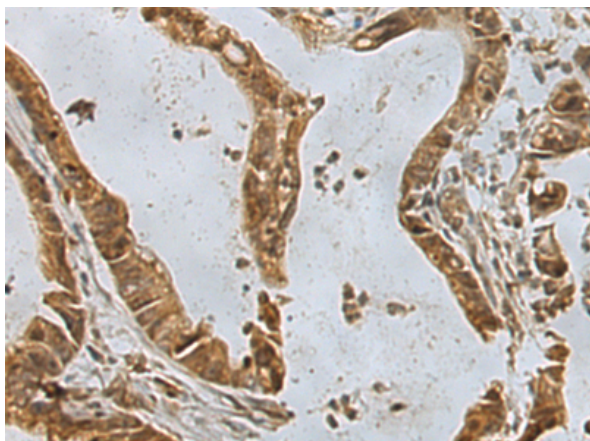
**Purification:** Antigen affinity purification

**Species Reactivity:** Human, Mouse, Rat

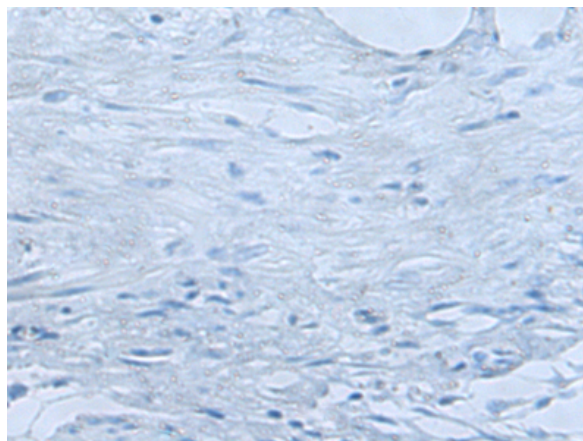
**Constituents:** PBS (without Mg<sup>2+</sup> and Ca<sup>2+</sup>), pH 7.4, 150 mM NaCl, 0.05% Sodium Azide and 40% glycerol

**Research Areas:** Epigenetics and Nuclear Signaling

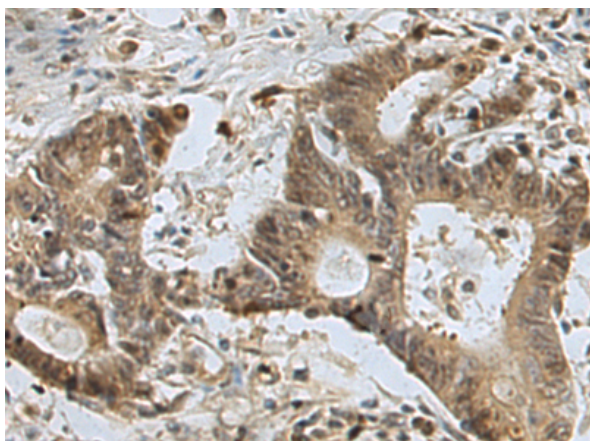
**Storage & Shipping:** Store at -20°C. Avoid repeated freezing and thawing



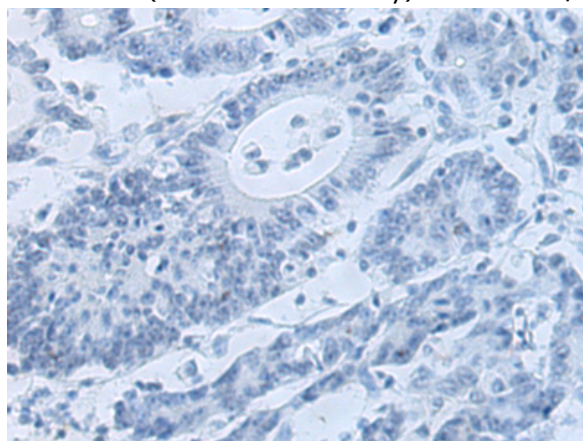
Immunohistochemistry analysis of paraffin embedded Human gastric cancer tissue using 219014(RPL13 Antibody) at a dilution of 1/80(Cytoplasm and Nucleus).



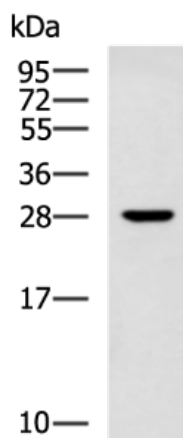
In comparison with the IHC on the left, the same paraffin-embedded Human gastric cancer tissue is first treated with the fusion protein and then with 219014(Anti-RPL13 Antibody) at dilution 1/80.



The image on the left is immunohistochemistry of paraffin-embedded Human colorectal cancer tissue using 219014(Anti-RPL13 Antibody) at a dilution of 1/80.



In comparison with the IHC on the left, the same paraffin-embedded Human colorectal cancer tissue is first treated with fusion protein and then with D225652(Anti-RPL13 Antibody) at dilution 1/80.



Gel: 12%SDS-PAGE, Lysate: 40 µg;  
Lane: A549 cell lysate;  
Primary antibody: 219014(RPL13 Antibody) at dilution 1/600;  
Secondary antibody: HRP-conjugated Goat anti rabbit IgG at 1/5000 dilution;  
Exposure time: 10 seconds



# Product Description

Pioneering GTPase and Oncogene Product Development since 2010

---