

## RPL35A RABBIT PAB

**Cat.#:** S218077

**Product Name:** Anti-RPL35A Rabbit Polyclonal Antibody

**Synonyms:** DBA5; L35A

**UNIPROT ID:** P18077 (Gene Accession - BC001037 )

**Background:** Ribosomes, the organelles that catalyze protein synthesis, consist of a small 40S subunit and a large 60S subunit. Together these subunits are composed of 4 RNA species and approximately 80 structurally distinct proteins. This gene encodes a ribosomal protein that is a component of the 60S subunit. The protein belongs to the L35AE family of ribosomal proteins. It is located in the cytoplasm. The rat protein has been shown to bind to both initiator and elongator tRNAs, and thus, it is located at the P site, or P and A sites, of the ribosome.

**Immunogen:** Full length fusion protein

**Applications:** ELISA, WB, IHC

**Recommended Dilutions:** IHC: 25-100;WB: 200-1000;ELISA: 2000-5000

**Host Species:** Rabbit

**Clonality:** Rabbit Polyclonal

**Isotype:** Immunogen-specific rabbit IgG

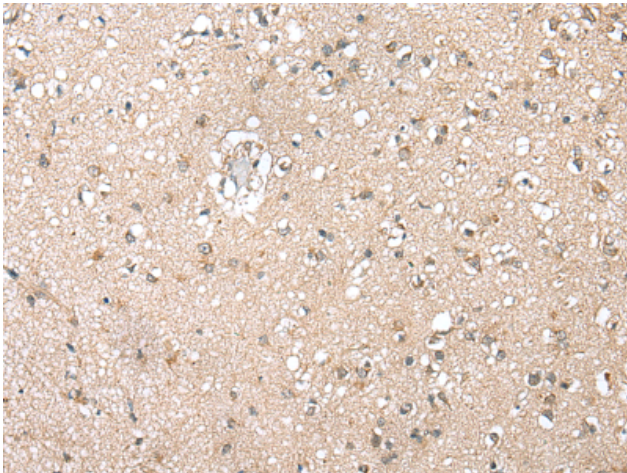
**Purification:** Antigen affinity purification

**Species Reactivity:** Human, Mouse, Rat

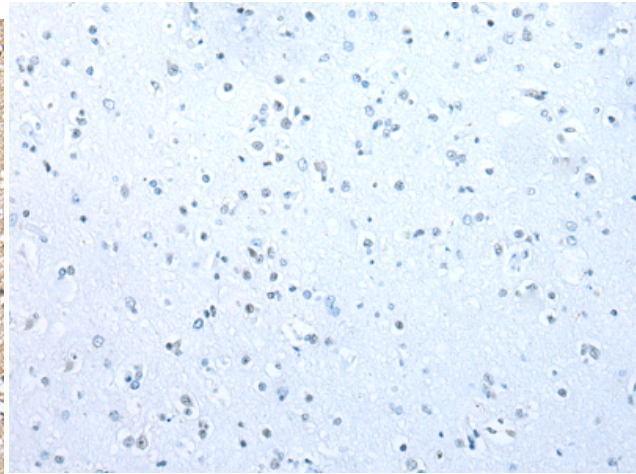
**Constituents:** PBS (without Mg<sup>2+</sup> and Ca<sup>2+</sup>), pH 7.4, 150 mM NaCl, 0.05% Sodium Azide and 40% glycerol

**Research Areas:** Epigenetics and Nuclear Signaling

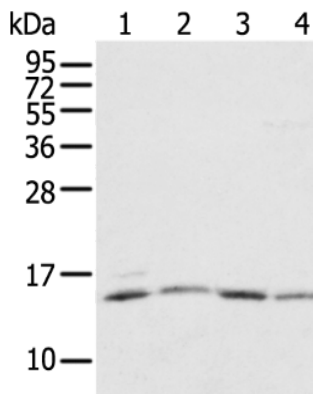
**Storage & Shipping:** Store at -20°C. Avoid repeated freezing and thawing



Immunohistochemistry analysis of paraffin embedded Human brain tissue using 218077(RPL35A Antibody) at a dilution of 1/20(Cytoplasm).



In comparison with the IHC on the left, the same paraffin-embedded Human brain tissue is first treated with the fusion protein and then with 218077(Anti-RPL35A Antibody) at dilution 1/20.



Gel: 12%SDS-PAGE, Lysate: 40 µg;  
Lane 1-4: PC-3, 231, 293T and Hela cell;  
Primary antibody: 218077(RPL35A Antibody) at dilution 1/200;  
Secondary antibody: Goat anti rabbit IgG at 1/8000 dilution;  
Exposure time: 1 minute