

## RPL7 RABBIT PAB

**Cat.#:** N225464

**Product Name:** Anti-RPL7 Rabbit pAb

**Synonyms:** L7; humL7-1

**UNIPROT ID:** P18124

**Background:** Component of the large ribosomal subunit (PubMed:12962325). Binds to G-rich structures in 28S rRNA and in mRNAs. Plays a regulatory role in the translation apparatus; inhibits cell-free translation of mRNAs.

**Immunogen:** The antiserum was produced against synthesized peptide derived from human RPL7. AA range:199-248

**Applications:** WB,IHC-P,ELISA

**Recommended Dilutions:** WB: 1/500-1/1000 IHC: 1/50-1/100 ELISA: 1/10000

**Host Species:** Rabbit

**Clonality:** Rabbit Polyclonal

**Clone ID:** -

**MW:** Calculated MW: 29 kDa; Observed MW: 32 kDa

**Isotype:** IgG

**Purification:** Affinity Chromatography

**Species Reactivity:** Human,Mouse,Rat

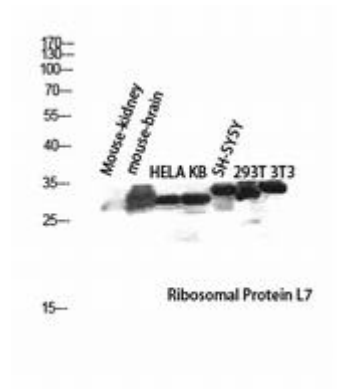
**Conjugation:** Unconjugated

**Modification:** Unmodified

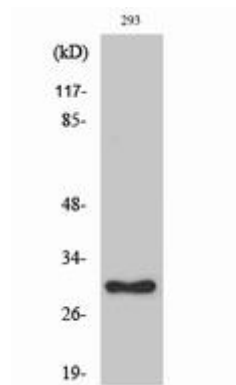
**Constituents:** PBS (without Mg<sup>2+</sup> and Ca<sup>2+</sup>), pH 7.3 containing 50% glycerol, 0.5% BSA and 0.02% sodium azide

**Research Areas:** Epigenetics and Nuclear Signaling

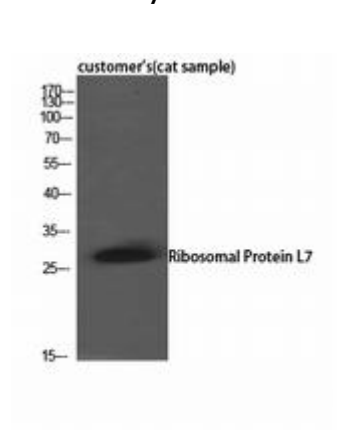
**Storage & Shipping:** Store at -20°C. Avoid repeated freezing and thawing



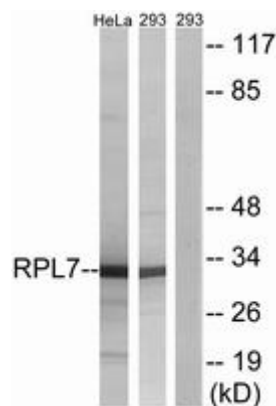
Western blot analysis of RPL7 in mouse kidney, mouse brain, HELA, KB, SH-SY5Y, 293T and 3T3 lysates using Ribosomal Protein L7 antibody.



Western blot analysis of RPL7 in various lysates using RPL7 antibody.



Western blot analysis of RPL7 in cat sample lysates using Ribosomal Protein L7 antibody.



Western blot analysis of RPL7 in 293 and HeLa lysates using RPL7 antibody. The lane on the right is blocked with the synthesized peptide.