

RPN1 RABBIT PAB

Cat.#: S217087

Product Name: Anti-RPN1 Rabbit Polyclonal Antibody

Synonyms: OST1; RBPH1

UNIPROT ID: P04843 (Gene Accession - BC010839)

Background: This gene encodes a type I integral membrane protein found only in the rough endoplasmic reticulum. The encoded protein is part of an N-oligosaccharyl transferase complex that links high mannose oligosaccharides to asparagine residues found in the Asn-X-Ser/Thr consensus motif of nascent polypeptide chains. This protein forms part of the regulatory subunit of the 26S proteasome and may mediate binding of ubiquitin-like domains to this proteasome.

Immunogen: Fusion protein of human RPN1

Applications: ELISA, WB, IHC

Recommended Dilutions: IHC: 25-100;WB: 500-2000;ELISA: 2000-5000

Host Species: Rabbit

Clonality: Rabbit Polyclonal

Isotype: Immunogen-specific rabbit IgG

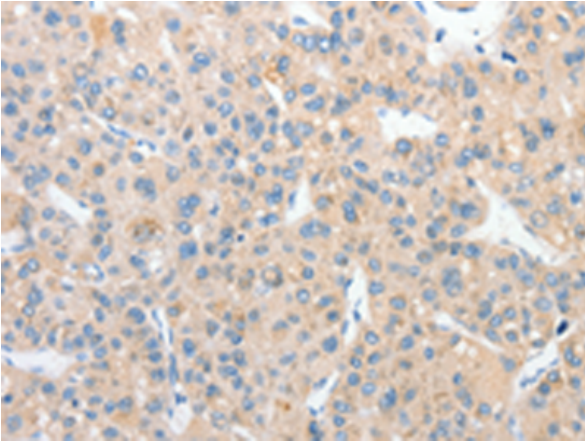
Purification: Antigen affinity purification

Species Reactivity: Human, Mouse, Rat

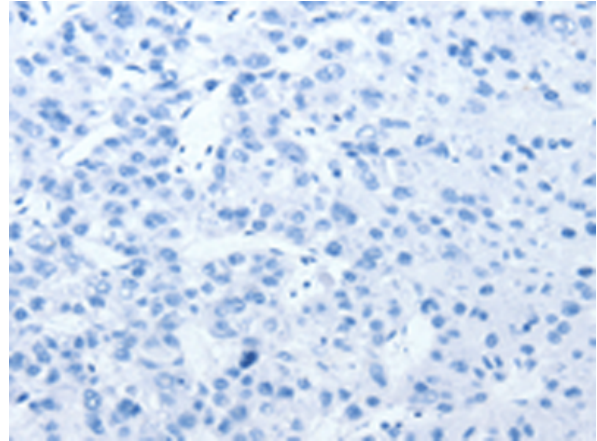
Constituents: PBS (without Mg²⁺ and Ca²⁺), pH 7.4, 150 mM NaCl, 0.05% Sodium Azide and 40% glycerol

Research Areas: Epigenetics and Nuclear Signaling

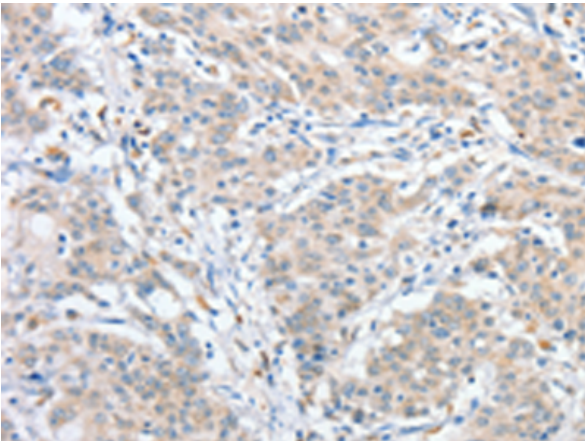
Storage & Shipping: Store at -20°C. Avoid repeated freezing and thawing



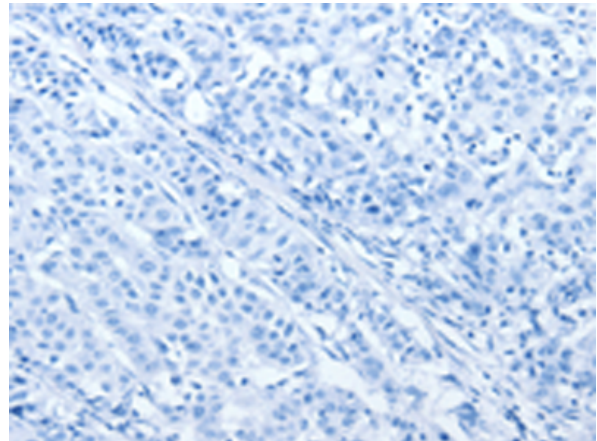
Immunohistochemistry analysis of paraffin embedded Human liver cancer tissue using 217087(RPNI Antibody) at a dilution of 1/25(Cytoplasm).



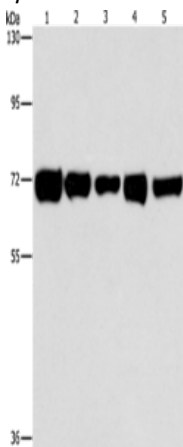
In comparison with the IHC on the left, the same paraffin-embedded Human liver cancer tissue is first treated with the fusion protein and then with 217087(Anti-RPNI Antibody) at dilution 1/25.



The image on the left is immunohistochemistry of paraffin-embedded Human gastric cancer tissue using 217087(Anti-RPNI Antibody) at a dilution of 1/25.



In comparison with the IHC on the left, the same paraffin-embedded Human gastric cancer tissue is first treated with fusion protein and then with D221767(Anti-RPNI Antibody) at dilution 1/25.



Gel: 8%SDS-PAGE, Lysate: 40 µg;
Lane 1-5: Hela cells, A549 cells, MCF7 cells, human liver cancer tissue, Human lung cancer tissue;
Primary antibody: 217087(RPNI Antibody) at dilution 1/550;
Secondary antibody: Goat anti rabbit IgG at 1/8000 dilution;
Exposure time: 1 minute



Product Description

Pioneering GTPase and Oncogene Product Development since 2010
