

RPP14 RABBIT PAB

Cat.#: S218950

Product Name: Anti-RPP14 Rabbit Polyclonal Antibody

Synonyms: P14

UNIPROT ID: O95059 (Gene Accession - BC012017)

Background: This gene encodes a subunit of ribonuclease P and has 3' to 5' exoribonuclease activity. Transcripts for this gene are bicistronic and include a conserved downstream open reading frame for the hydroxyacyl-thioester dehydratase type 2 (HTD2) gene.

Immunogen: Fusion protein of human RPP14

Applications: ELISA, WB, IHC

Recommended Dilutions: IHC: 40-200;WB: 200-1000;ELISA: 5000-10000

Host Species: Rabbit

Clonality: Rabbit Polyclonal

Isotype: Immunogen-specific rabbit IgG

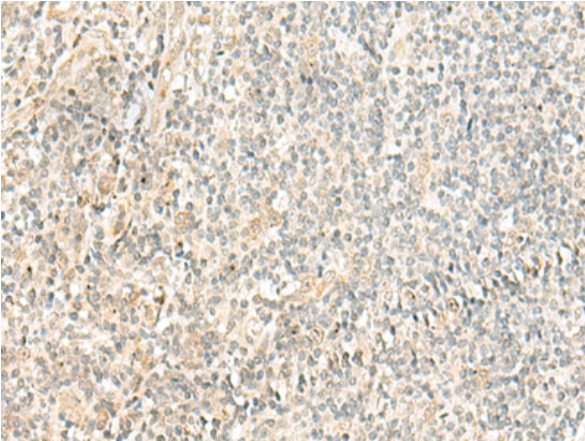
Purification: Antigen affinity purification

Species Reactivity: Human, Mouse

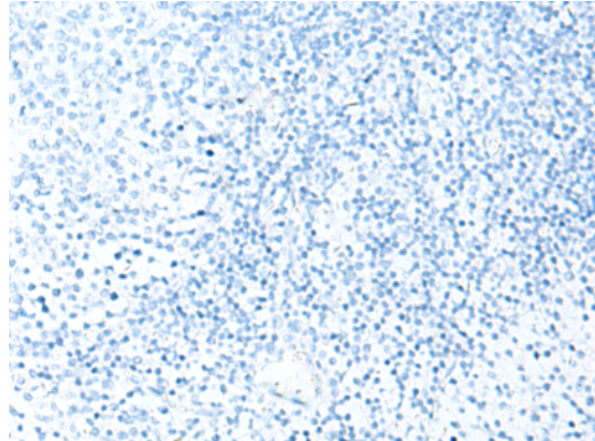
Constituents: PBS (without Mg²⁺ and Ca²⁺), pH 7.4, 150 mM NaCl, 0.05% Sodium Azide and 40% glycerol

Research Areas: Epigenetics and Nuclear Signaling

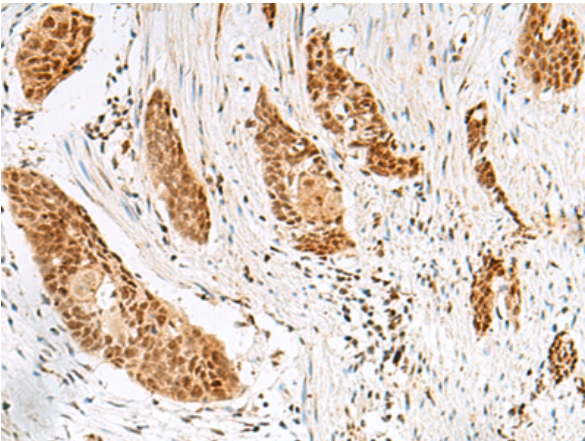
Storage & Shipping: Store at -20°C. Avoid repeated freezing and thawing



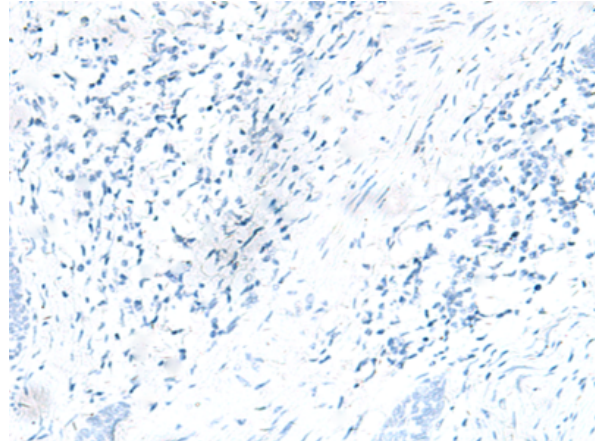
Immunohistochemistry analysis of paraffin embedded Human tonsil tissue using 218950(RPPI4 Antibody) at a dilution of 1/40(Cytoplasm or Nucleus).



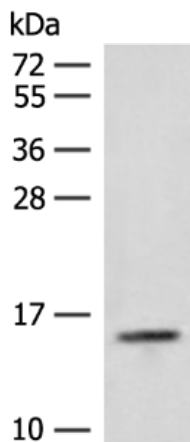
In comparison with the IHC on the left, the same paraffin-embedded Human tonsil tissue is first treated with the fusion protein and then with 218950(Anti-RPPI4 Antibody) at dilution 1/40.



The image on the left is immunohistochemistry of paraffin-embedded Human esophagus cancer tissue using 218950(Anti-RPPI4 Antibody) at a dilution of 1/40.



In comparison with the IHC on the left, the same paraffin-embedded Human esophagus cancer tissue is first treated with fusion protein and then with D225559(Anti-RPPI4 Antibody) at dilution 1/40.



Gel: 12%SDS-PAGE, Lysate: 40 µg;
Lane: Hela cell lysate;
Primary antibody: 218950(RPPI4 Antibody) at dilution 1/250;
Secondary antibody: Goat anti rabbit IgG at 1/8000 dilution;
Exposure time: 30 seconds



Product Description

Pioneering GTPase and Oncogene Product Development since 2010
