

RPS20 RABBIT MAB

Cat.#: N263535

Product Name: Anti-RPS20 Rabbit Monoclonal Antibody

Synonyms: RPS20; 40S ribosomal protein S20

UNIPROT ID: P60866

Background: RPS20 is a ribosomal protein that is a component of the 40S subunit. Ribosomes, the organelles that catalyze protein synthesis, consist of a small 40S subunit and a large 60S subunit. Together these subunits are composed of 4 RNA species and approximately 80 structurally distinct proteins. RPS20 belongs to the S10P family of ribosomal proteins and is located in the cytoplasm.

Immunogen: A synthetic peptide of human RPS20

Applications: WB,IHC-P

Recommended Dilutions: WB: 1/500-1/1000 IHC: 1/50-1/100

Host Species: Rabbit

Clonality: Rabbit Monoclonal

Clone ID: R08-2A0

MW: Calculated MW: 13 kDa; Observed MW: 13 kDa

Isotype: IgG

Purification: Affinity Purified

Species Reactivity: Human,Mouse,Rat,Hamster

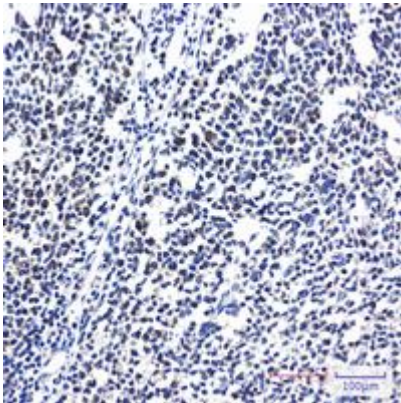
Conjugation: Unconjugated

Modification: Unmodified

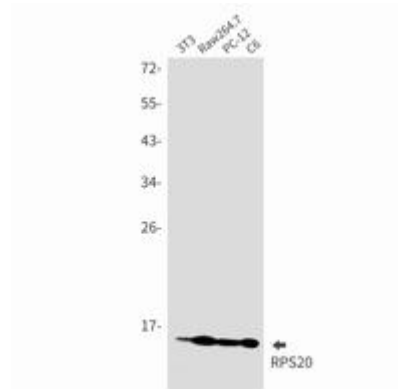
Constituents: PBS (without Mg²⁺ and Ca²⁺), pH 7.3 containing 50% glycerol, 0.5% BSA and 0.02% sodium azide

Research Areas: Epigenetics and Nuclear Signaling

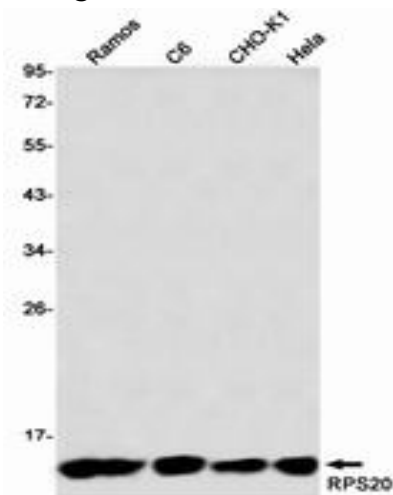
Storage & Shipping: Store at -20°C. Avoid repeated freezing and thawing



Immunohistochemistry analysis of paraffin-embedded Human tonsil using RPS20 antibody. High-pressure and temperature Sodium Citrate pH 6.0 was used for antigen retrieval.



Western blot analysis of RPS20 in 3T3, Raw264.7, PC-12, C6 lysates using RPS20 antibody.



Western blot analysis of RPS20 in HeLa, CHO-K1, C6, Ramos lysates using RPS20 antibody.