

RPS27 RABBIT PAB

Cat.#: S216218

Product Name: Anti-RPS27 Rabbit Polyclonal Antibody

Synonyms: S27; MPS1; eS27; DBA17; MPS-1

UNIPROT ID: P42677 (Gene Accession - BC002658)

Background: Ribosomes, the organelles that catalyze protein synthesis, consist of a small 40S subunit and a large 60S subunit. Together these subunits are composed of four RNA species and approximately 80 structurally distinct proteins. This gene encodes a member of the S27e family of ribosomal proteins and component of the 40S subunit. The encoded protein contains a C4-type zinc finger domain that can bind to zinc and may bind to nucleic acid. Mutations in this gene have been identified in numerous melanoma patients and in at least one patient with Diamond-Blackfan anemia (DBA). Elevated expression of this gene has been observed in various human cancers. As is typical for genes encoding ribosomal proteins, there are multiple processed pseudogenes of this gene dispersed through the genome.

Immunogen: Fusion protein of human RPS27

Applications: ELISA, WB, IHC

Recommended Dilutions: IHC: 25-100;WB: 500-2000;ELISA: 1000-2000

Host Species: Rabbit

Clonality: Rabbit Polyclonal

Isotype: Immunogen-specific rabbit IgG

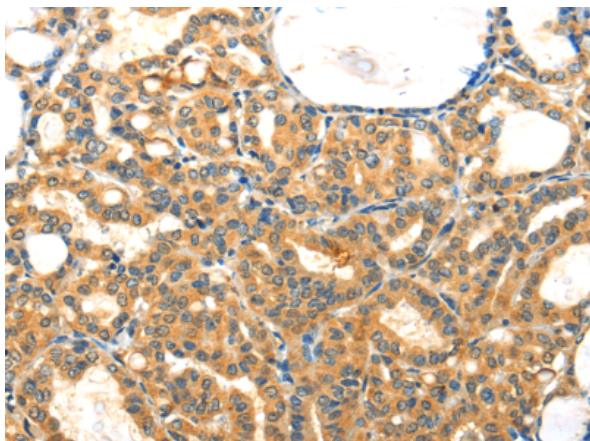
Purification: Antigen affinity purification

Species Reactivity: Human, Mouse, Rat

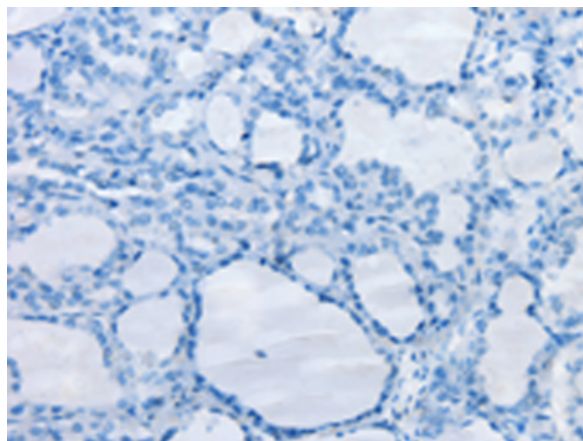
Constituents: PBS (without Mg²⁺ and Ca²⁺), pH 7.4, 150 mM NaCl, 0.05% Sodium Azide and 40% glycerol

Research Areas: Epigenetics and Nuclear Signaling

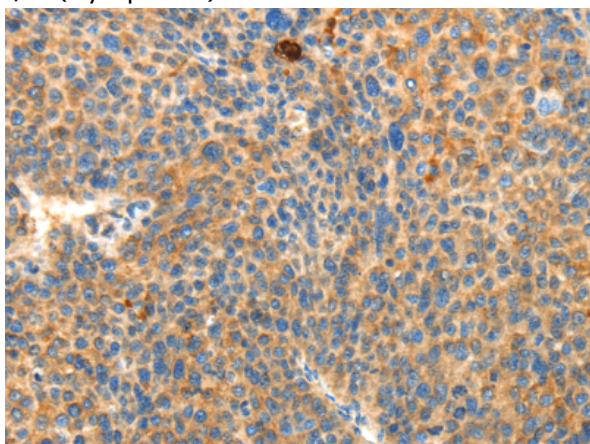
Storage & Shipping: Store at -20°C. Avoid repeated freezing and thawing



Immunohistochemistry analysis of paraffin embedded Human thyroid cancer tissue using 216218(RPS27 Antibody) at a dilution of 1/25(Cytoplasm).



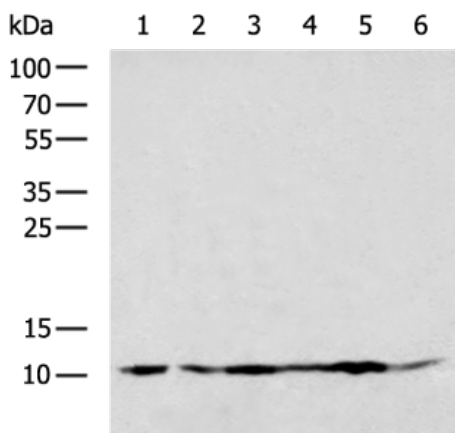
In comparison with the IHC on the left, the same paraffin-embedded Human thyroid cancer tissue is first treated with the fusion protein and then with 216218(Anti-RPS27 Antibody) at dilution 1/25.



The image on the left is immunohistochemistry of paraffin-embedded Human liver cancer tissue using 216218(Anti-RPS27 Antibody) at a dilution of 1/25.



In comparison with the IHC on the left, the same paraffin-embedded Human liver cancer tissue is first treated with fusion protein and then with D220011(Anti-RPS27 Antibody) at dilution 1/25.



Gel: 12%SDS-PAGE, Lysate: 40 µg;
 Lane 1-6: Lo2, K562, Raji, Jurkat, HeLa, MCF7 cell lysates;
 Primary antibody: 216218(RPS27 Antibody) at dilution 1/650;
 Secondary antibody: HRP-conjugated Goat anti rabbit IgG at 1/5000 dilution;
 Exposure time: 20 seconds



Product Description

Pioneering GTPase and Oncogene Product Development since 2010
