

RPS27L RABBIT PAB

Cat.#: S218784

Product Name: Anti-RPS27L Rabbit Polyclonal Antibody

Synonyms:

UNIPROT ID: Q71UM5 (Gene Accession - BC003667)

Background: This gene encodes a protein sharing 96% amino acid similarity with ribosomal protein S27, which suggests the encoded protein may be a component of the 40S ribosomal subunit.

Immunogen: Fusion protein of human RPS27L

Applications: ELISA, WB, IHC

Recommended Dilutions: IHC: 40-200;WB: 500-2000;ELISA: 5000-10000

Host Species: Rabbit

Clonality: Rabbit Polyclonal

Isotype: Immunogen-specific rabbit IgG

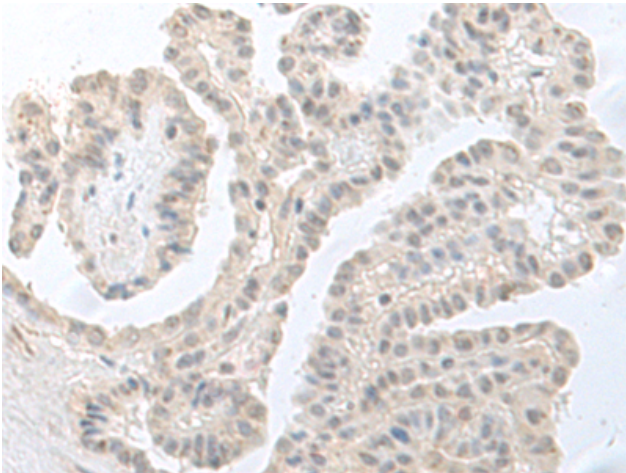
Purification: Antigen affinity purification

Species Reactivity: Human, Mouse, Rat

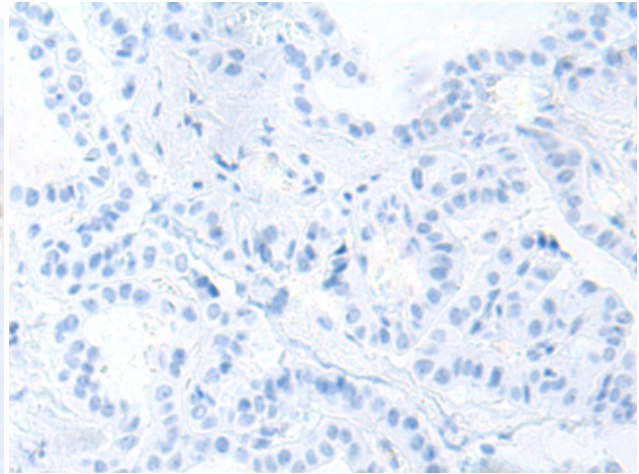
Constituents: PBS (without Mg²⁺ and Ca²⁺), pH 7.4, 150 mM NaCl, 0.05% Sodium Azide and 40% glycerol

Research Areas: Epigenetics and Nuclear Signaling, Cancer

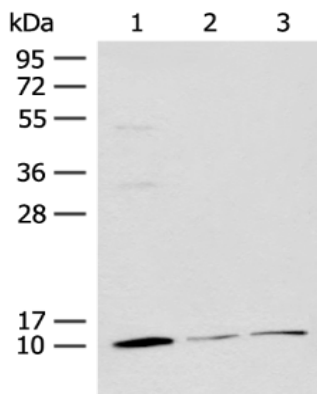
Storage & Shipping: Store at -20°C. Avoid repeated freezing and thawing



Immunohistochemistry analysis of paraffin embedded Human thyroid cancer tissue using 218784(RPS27L Antibody) at a dilution of 1/55(Nucleus).



In comparison with the IHC on the left, the same paraffin-embedded Human thyroid cancer tissue is first treated with the fusion protein and then with 218784(Anti-RPS27L Antibody) at dilution 1/55.



Gel: 12%SDS-PAGE, Lysate: 40 µg;
 Lane 1-3: Mouse adrenal gland tissue, Rat lung tissue, 231 cell lysates;
 Primary antibody: 218784(RPS27L Antibody) at dilution 1/400;
 Secondary antibody: Goat anti rabbit IgG at 1/8000 dilution;
 Exposure time: 10 seconds