

## RPS6 (7B10) MOUSE MAB

**Cat.#:** N261164

**Product Name:** Anti-RPS6 (7B10) Mouse Monoclonal Antibody

**Synonyms:** RPS6; OK/SW-cl.2; 40S ribosomal protein S6; Phosphoprotein NP33

**UNIPROT ID:** P62753

**Background:** May play an important role in controlling cell growth and proliferation through the selective translation of particular classes of mRNA.

**Immunogen:** Recombinant full length protein corresponding to human S6 Ribosomal Protein.

**Applications:** WB, ICC/IF, IP

**Recommended Dilutions:** WB: 1/500-1/1000 IF: 1/50-1/200 IP: 1/20

**Host Species:** Mouse

**Clonality:** Mouse Monoclonal

**Clone ID:** 7B10-E11-E11

**MW:** Calculated MW: 29 kDa; Observed MW: 32 kDa

**Isotype:** IgG1

**Purification:** Affinity Purified

**Species Reactivity:** Human, Mouse, Rat, Monkey

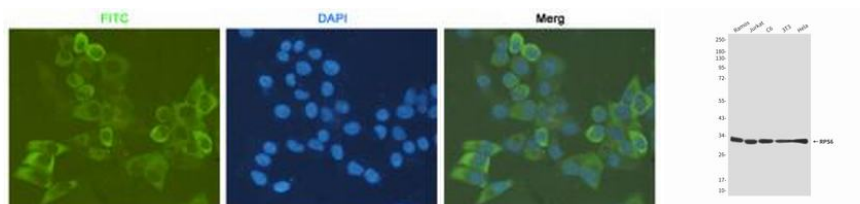
**Conjugation:** Unconjugated

**Modification:** Unmodified

**Constituents:** PBS (without Mg<sup>2+</sup> and Ca<sup>2+</sup>), pH 7.3 containing 50% glycerol, 0.5% BSA and 0.02% sodium azide

**Research Areas:** Epigenetics and Nuclear Signaling

**Storage & Shipping:** Store at -20°C. Avoid repeated freezing and thawing



Immunocytochemistry analysis of RPS6 (7B10) in HeLa using S6 Ribosomal Protein antibody. Western blot analysis of S6 Ribosomal Protein in Ramos, Jurkat, C6, 3T3 and HeLa lysates using S6 Ribosomal Protein antibody.



Immunoprecipitation analysis of RPS6 (7B10) in HeLa lysates using S6 Ribosomal Protein antibody.

Western blot analysis of RPS6 (7B10) in CHO-K1, Raji, Raw264.7 and COS7 lysates using RPS6 (7B10) antibody