

## RPS6 RABBIT MAB

**Cat.#:** N262848

**Product Name:** Anti-RPS6 Rabbit Monoclonal Antibody

**Synonyms:** RPS6; OK/SW-cl.2; 40S ribosomal protein S6; Phosphoprotein NP33

**UNIPROT ID:** P62753

**Background:** May play an important role in controlling cell growth and proliferation through the selective translation of particular classes of mRNA.

**Immunogen:** Synthetic peptide derived from human S6 Ribosomal Protein.

**Applications:** WB,IHC-F,IHC-P,ICC/IF,IP

**Recommended Dilutions:** WB: 1/500-1/1000 IHC: 1/50-1/100 IF: 1/50-1/200 IP: 1/20

**Host Species:** Rabbit

**Clonality:** Rabbit Monoclonal

**Clone ID:** R05-3A4

**MW:** Calculated MW: 29 kDa; Observed MW: 29 kDa

**Isotype:** IgG

**Purification:** Affinity Purified

**Species Reactivity:** Human,Mouse,Rat

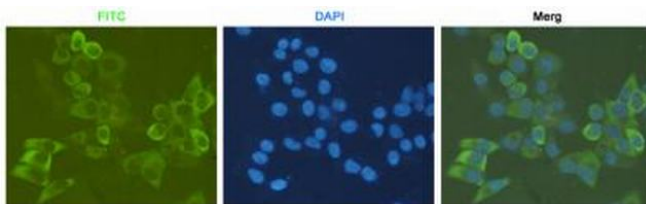
**Conjugation:** Unconjugated

**Modification:** Unmodified

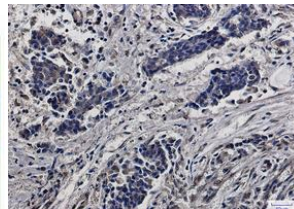
**Constituents:** PBS (without Mg<sup>2+</sup> and Ca<sup>2+</sup>), pH 7.3 containing 50% glycerol, 0.5% BSA and 0.02% sodium azide

**Research Areas:** Epigenetics and Nuclear Signaling

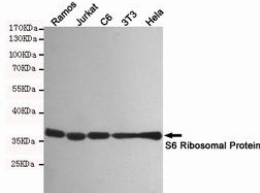
**Storage & Shipping:** Store at -20°C. Avoid repeated freezing and thawing



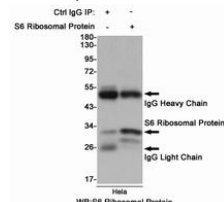
Immunocytochemistry analysis of HeLa using antiS6 Ribosomal Protein antibody.



Immunohistochemistry analysis of paraffin-embedded Human breast cancer using RPS6 antibody. High-pressure and temperature Sodium Citrate pH 6.0 was used for antigen retrieval.



Western blot analysis of S6 Ribosomal Protein in Ramos, Jurkat, C6, 3T3 and HeLa lysates using S6 Ribosomal Protein antibody.



Immunoprecipitation analysis of HeLa cell lysates using S6 Ribosomal Protein antibody.