

RPS6KA1 RABBIT PAB

Cat.#: S217785

Product Name: Anti-RPS6KA1 Rabbit Polyclonal Antibody

Synonyms: RSK; HU-1; RSK1; MAPKAPK1A

UNIPROT ID: Q15418 (Gene Accession - BC014966)

Background: This gene encodes a member of the RSK (ribosomal S6 kinase) family of serine/threonine kinases. This kinase contains 2 nonidentical kinase catalytic domains and phosphorylates various substrates, including members of the mitogen-activated kinase (MAPK) signalling pathway. The activity of this protein has been implicated in controlling cell growth and differentiation. Alternate transcriptional splice variants, encoding different isoforms, have been characterized.

Immunogen: Fusion protein of human RPS6KA1

Applications: ELISA, WB, IHC

Recommended Dilutions: IHC: 30-150;WB: 500-2000;ELISA: 2000-5000

Host Species: Rabbit

Clonality: Rabbit Polyclonal

Isotype: Immunogen-specific rabbit IgG

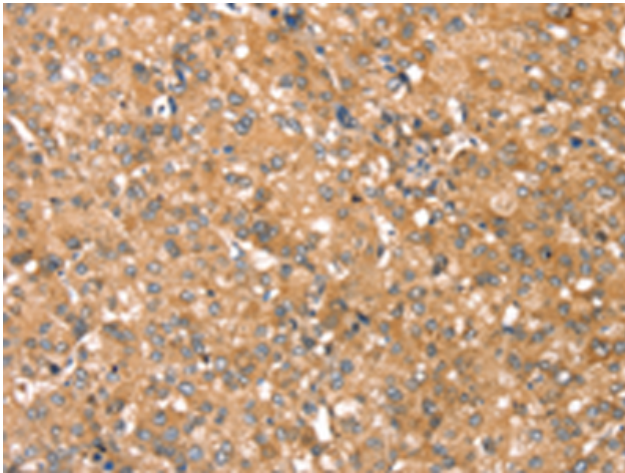
Purification: Antigen affinity purification

Species Reactivity: Human, Mouse, Rat

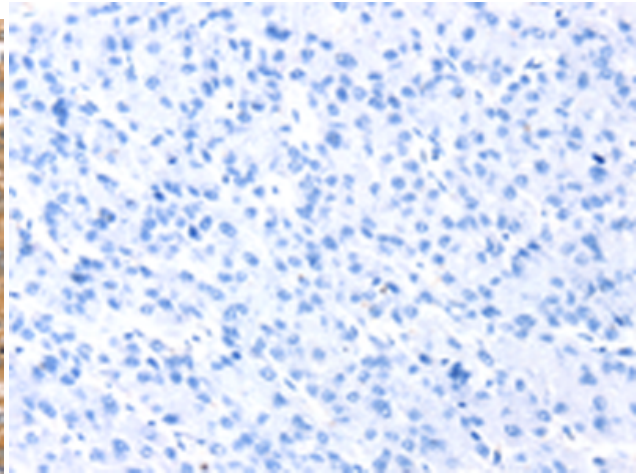
Constituents: PBS (without Mg²⁺ and Ca²⁺), pH 7.4, 150 mM NaCl, 0.05% Sodium Azide and 40% glycerol

Research Areas: Signal Transduction, Epigenetics and Nuclear Signaling

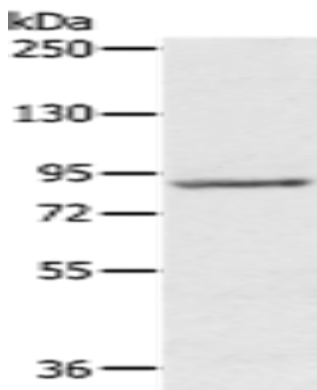
Storage & Shipping: Store at -20°C. Avoid repeated freezing and thawing



Immunohistochemistry analysis of paraffin embedded Human liver cancer tissue using 217785(RPS6KA1 Antibody) at a dilution of 1/45(Cytoplasm).



In comparison with the IHC on the left, the same paraffin-embedded Human liver cancer tissue is first treated with the fusion protein and then with 217785(Anti-RPS6KA1 Antibody) at dilution 1/45.



Gel: 6%SDS-PAGE, Lysate: 40 μ g;
Lane: 231 cells;
Primary antibody: 217785(RPS6KA1 Antibody)
at dilution 1/800;
Secondary antibody: Goat anti rabbit IgG at
1/8000 dilution;
Exposure time: 30 seconds