

RPS6KB1 RABBIT PAB

Cat.#: S216706

Product Name: Anti-RPS6KB1 Rabbit Polyclonal Antibody

Synonyms: S6K; PS6K; S6K1; STK14A; p70-S6K; p70 S6KA; p70-alpha; S6K-beta-1; p70(S6K)-alpha

UNIPROT ID: P23443 (Gene Accession - BC053365)

Background: This gene encodes a member of the ribosomal S6 kinase family of serine/threonine kinases. The encoded protein responds to mTOR (mammalian target of rapamycin) signaling to promote protein synthesis, cell growth, and cell proliferation. Activity of this gene has been associated with human cancer. Alternatively spliced transcript variants have been observed. The use of alternative translation start sites results in isoforms with longer or shorter N-termini which may differ in their subcellular localizations. There are two pseudogenes for this gene on chromosome 17.

Immunogen: Fusion protein of human RPS6KB1

Applications: ELISA, WB, IHC

Recommended Dilutions: IHC: 25-100;WB: 500-2000;ELISA: 1000-5000

Host Species: Rabbit

Clonality: Rabbit Polyclonal

Isotype: Immunogen-specific rabbit IgG

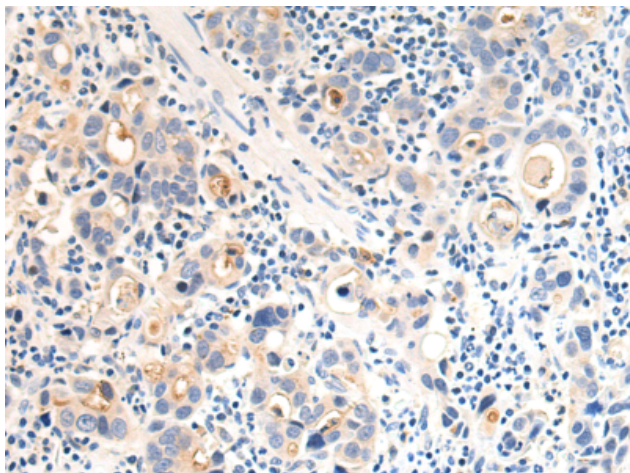
Purification: Antigen affinity purification

Species Reactivity: Human, Mouse, Rat

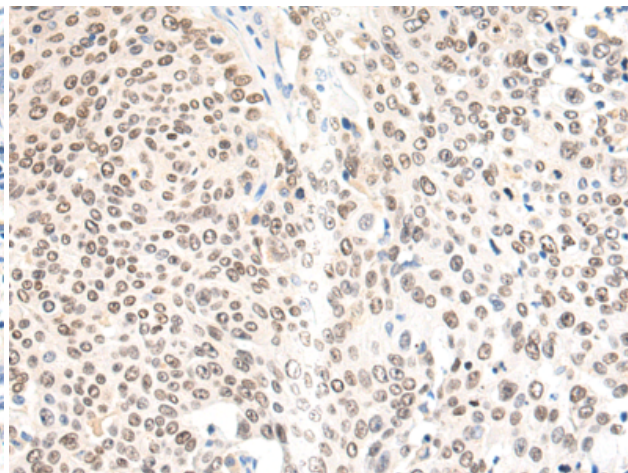
Constituents: PBS (without Mg²⁺ and Ca²⁺), pH 7.4, 150 mM NaCl, 0.05% Sodium Azide and 40% glycerol

Research Areas: Signal Transduction, Epigenetics and Nuclear Signaling, Metabolism, Cancer

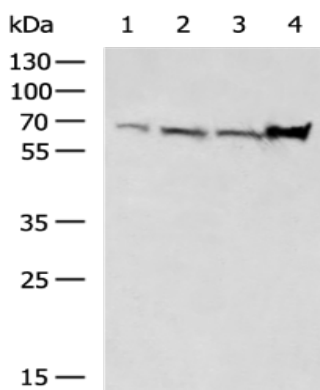
Storage & Shipping: Store at -20°C. Avoid repeated freezing and thawing



Immunohistochemistry analysis of paraffin-embedded Human gastric cancer tissue using 216706(RPS6KB1 Antibody) at a dilution of 1/25(Cytoplasm or Nucleus).



Immunohistochemistry analysis of paraffin-embedded Human bladder cancer tissue using 216706(Anti-RPS6KB1 Antibody) at a dilution of 1/25.



Gel: 8%SDS-PAGE, Lysate: 40 µg;
 Lane 1-4: Jurkat, 293T, HeLa, Mouse liver tissue lysates;
 Primary antibody: 216706(RPS6KB1 Antibody) at dilution 1/200;
 Secondary antibody: HRP-conjugated Goat anti rabbit IgG at 1/5000 dilution;
 Exposure time: 1 minute