

RPS8 RABBIT MAB

Cat.#: N263536

Product Name: Anti-RPS8 Rabbit Monoclonal Antibody

Synonyms: S8

UNIPROT ID: P62241

Background: Ribosomes, the organelles that catalyze protein synthesis, consist of a small 40S subunit and a large 60S subunit. Together these subunits are composed of 4 RNA species and approximately 80 structurally distinct proteins. This gene encodes a ribosomal protein that is a component of the 40S subunit. The protein belongs to the S8E family of ribosomal proteins.

Immunogen: Recombinant protein of human RPS8

Applications: WB, ICC/IF, IP

Recommended Dilutions: WB: 1/500-1/1000 IF: 1/50-1/200 IP: 1/20

Host Species: Rabbit

Clonality: Rabbit Monoclonal

Clone ID: R05-518

MW: Calculated MW: 24 kDa; Observed MW: 24 kDa

Isotype: IgG

Purification: Affinity Purified

Species Reactivity: Human, Mouse, Rat, Hamster

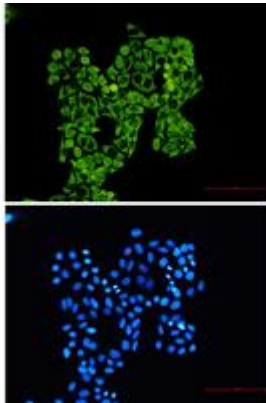
Conjugation: Unconjugated

Modification: Unmodified

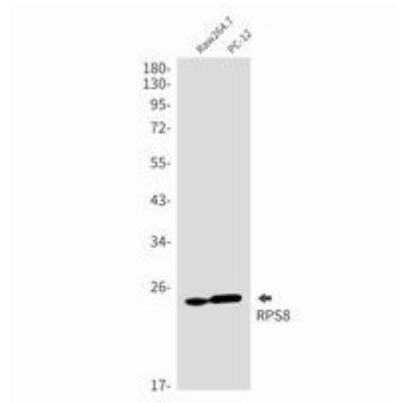
Constituents: PBS (without Mg²⁺ and Ca²⁺), pH 7.3 containing 50% glycerol, 0.5% BSA and 0.02% sodium azide

Research Areas: -

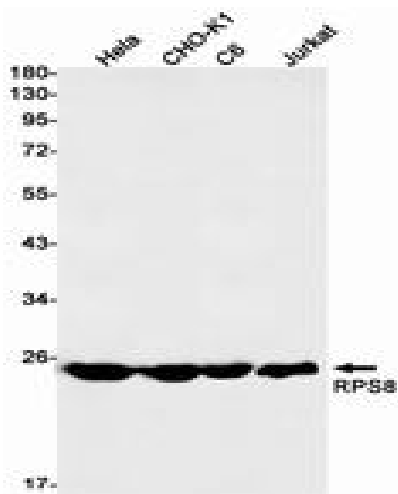
Storage & Shipping: Store at -20°C. Avoid repeated freezing and thawing



Immunocytochemistry analysis of RPS8 (green) in HeLa using RPS8 antibody, and DAPI (blue)



Western blot analysis of RPS8 in Raw264.7, PC-12 lysates using RPS8 antibody.



Western blot analysis of RPS8 in HeLa, CHO-K1, C6, Jurkat lysates using RPS8 antibody.