

RPUSD2 RABBIT PAB

Cat.#: S219493

Product Name: Anti-RPUSD2 Rabbit Polyclonal Antibody

Synonyms: PUS9; C18B11; C15orf19

UNIPROT ID: Q8IZ73 (Gene Accession - BC016967)

Background: The function of this protein remains unknown.

Immunogen: Fusion protein of human RPUSD2

Applications: ELISA, WB, IHC

Recommended Dilutions: IHC: 50-200;WB: 500-2000;ELISA: 5000-10000

Host Species: Rabbit

Clonality: Rabbit Polyclonal

Isotype: Immunogen-specific rabbit IgG

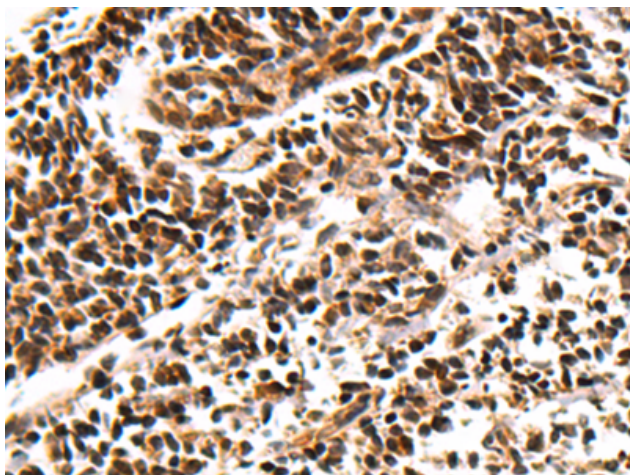
Purification: Antigen affinity purification

Species Reactivity: Human

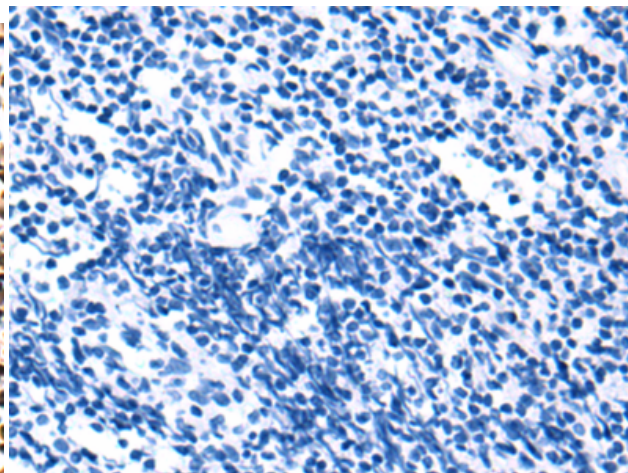
Constituents: PBS (without Mg²⁺ and Ca²⁺), pH 7.4, 150 mM NaCl, 0.05% Sodium Azide and 40% glycerol

Research Areas: Epigenetics and Nuclear Signaling

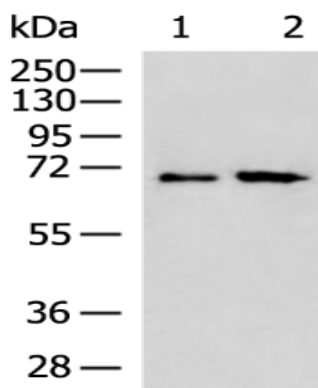
Storage & Shipping: Store at -20°C. Avoid repeated freezing and thawing



Immunohistochemistry analysis of paraffin embedded Human tonsil tissue using 219493(RPUSD2 Antibody) at a dilution of 1/95(Cytoplasm and Nucleus).



In comparison with the IHC on the left, the same paraffin-embedded Human tonsil tissue is first treated with the fusion protein and then with 219493(Anti-RPUSD2 Antibody) at dilution 1/95.



Gel: 8%SDS-PAGE, Lysate: 40 µg;
Lane 1-2: A549 and Hela cell lysates;
Primary antibody: 219493(RPUSD2 Antibody) at dilution 1/700;
Secondary antibody: HRP-conjugated Goat anti rabbit IgG at 1/5000 dilution;
Exposure time: 3 minutes