

RRAD RABBIT PAB

Cat.#: S220186

Product Name: Anti-RRAD Rabbit Polyclonal Antibody

Synonyms: RAD; RAD1; REM3

UNIPROT ID: P55042 (Gene Accession - NP_004156.1)

Background: The protein may be important in cardiac antiarrhythmia via the strong suppression of voltage-gated L-type Ca²⁺ currents. As regulator of voltage-dependent L-type calcium channel subunit alpha-1C trafficking to the cell membrane. Inhibits cardiac hypertrophy through the calmodulin-dependent kinase II (CaMKII) pathway and phosphorylation and activation of CAMK2D. Mostly expressed in the heart and muscle of type II diabetic humans. Also found in the skeletal muscle, lung and adipose tissue. Lesser amounts in placenta and kidney.

Immunogen: Synthetic peptide of human RRAD

Applications: ELISA, IHC

Recommended Dilutions: IHC: 50-200; ELISA: 2000-5000

Host Species: Rabbit

Clonality: Rabbit Polyclonal

Isotype: Immunogen-specific rabbit IgG

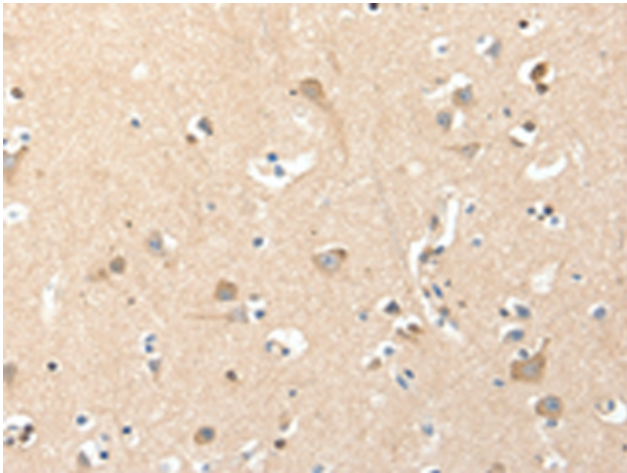
Purification: Antigen affinity purification

Species Reactivity: Human, Mouse, Rat

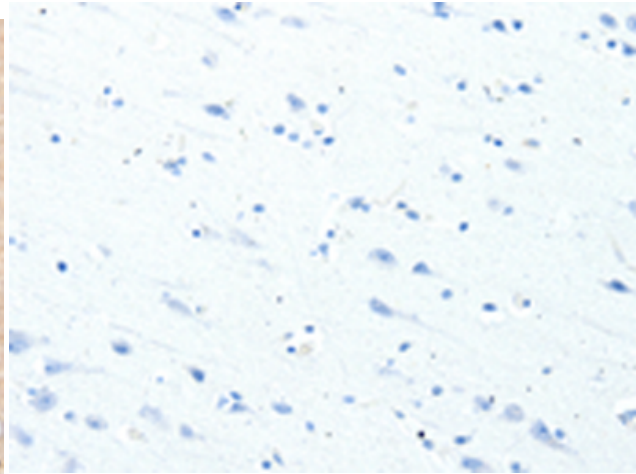
Constituents: PBS (without Mg²⁺ and Ca²⁺), pH 7.4, 150 mM NaCl, 0.05% Sodium Azide and 40% glycerol

Research Areas: Signal Transduction, Cardiovascular

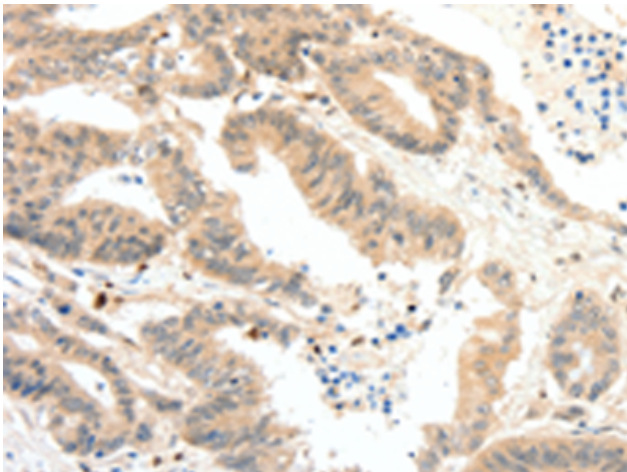
Storage & Shipping: Store at -20°C. Avoid repeated freezing and thawing



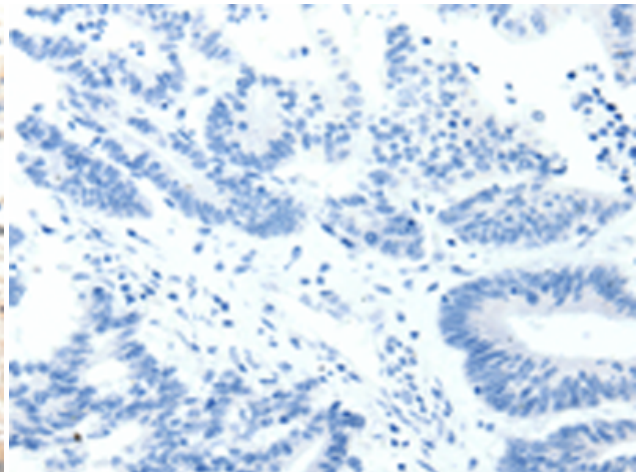
Immunohistochemistry analysis of paraffin embedded Human brain tissue using 220186(RRAD Antibody) at a dilution of 1/50(Cytoplasm).



In comparison with the IHC on the left, the same paraffin-embedded Human brain tissue is first treated with the synthetic peptide and then with 220186(Anti-RRAD Antibody) at dilution 1/50.



The image on the left is immunohistochemistry of paraffin-embedded Human colon cancer tissue using 220186(Anti-RRAD Antibody) at a dilution of 1/50.



In comparison with the IHC on the left, the same paraffin-embedded Human colon cancer tissue is first treated with synthetic peptide and then with D261101(Anti-RRAD Antibody) at dilution 1/50.