

RRAS RABBIT PAB

Cat.#: S220865

Product Name: Anti-RRAS Rabbit Polyclonal Antibody

Synonyms:

UNIPROT ID: P10301 (Gene Accession - NP_006261)

Background: The R-Ras protein has been shown to interact with the Bcl-2 gene product involved in a signaling pathway that intervenes with apoptosis. Positions 38 and 87 (analogous to positions 12 and 61 in H-Ras) mutants of R-Ras have been shown to be capable of activating oncogenic function. Data has been obtained indicating that R-Ras may exert its biological effect by means of modulating the activity of the Raf-1 kinase on its direct downstream effectors.

Immunogen: Synthetic peptide of human RRAS

Applications: ELISA, WB, IHC

Recommended Dilutions: IHC: 25-100;WB: 500-2000;ELISA: 2000-5000

Host Species: Rabbit

Clonality: Rabbit Polyclonal

Isotype: Immunogen-specific rabbit IgG

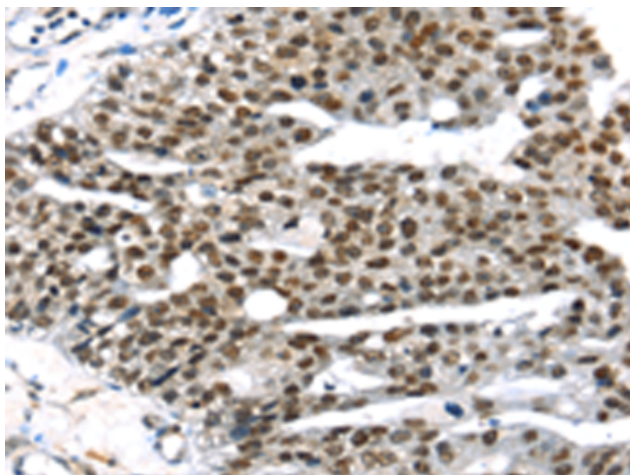
Purification: Antigen affinity purification

Species Reactivity: Human, Mouse, Rat

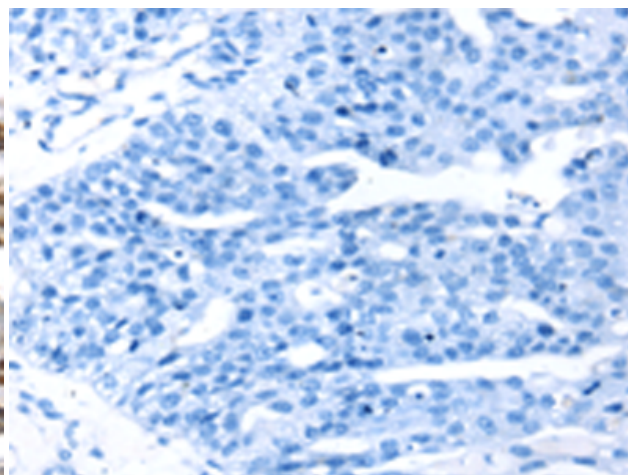
Constituents: PBS (without Mg²⁺ and Ca²⁺), pH 7.4, 150 mM NaCl, 0.05% Sodium Azide and 40% glycerol

Research Areas: Signal Transduction, Cancer

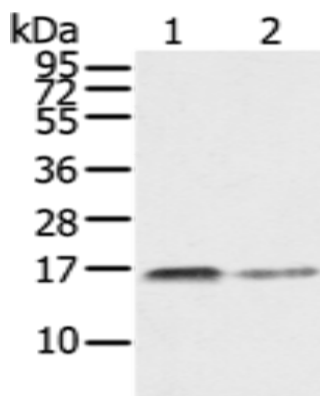
Storage & Shipping: Store at -20°C. Avoid repeated freezing and thawing



Immunohistochemistry analysis of paraffin embedded Human breast cancer tissue using 220865(RRAS Antibody) at a dilution of 1/25(Cytoplasm and Nucleus).



In comparison with the IHC on the left, the same paraffin-embedded Human breast cancer tissue is first treated with the synthetic peptide and then with 220865(Anti-RRAS Antibody) at dilution 1/25.



Gel: 6%SDS-PAGE, Lysate: 40 µg;
Lane 1-2: PC3 cells, A549 cells;
Primary antibody: 220865(RRAS Antibody) at dilution 1/350;
Secondary antibody: Goat anti rabbit IgG at 1/8000 dilution;
Exposure time: 30 seconds