

RRM1 RABBIT MAB

Cat.#: N262850

Product Name: Anti-RRM1 Rabbit Monoclonal Antibody

Synonyms: RRM1; R1; RIR1; RR1

UNIPROT ID: P23921

Background: Provides the precursors necessary for DNA synthesis. Catalyzes the biosynthesis of deoxyribonucleotides from the corresponding ribonucleotides.

Immunogen: A synthetic peptide of human RRM1

Applications: WB,IHC-F,IHC-P,ICC/IF,IP

Recommended Dilutions: WB: 1/500-1/1000 IHC: 1/50-1/100 IF: 1/50-1/200 IP: 1/20

Host Species: Rabbit

Clonality: Rabbit Monoclonal

Clone ID: R08-4D3

MW: Calculated MW: 90 kDa; Observed MW: 90 kDa

Isotype: IgG

Purification: Affinity Purified

Species Reactivity: Human

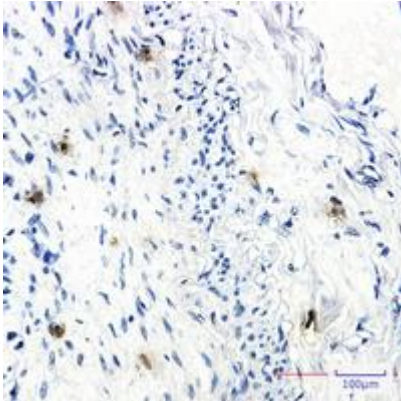
Conjugation: Unconjugated

Modification: Unmodified

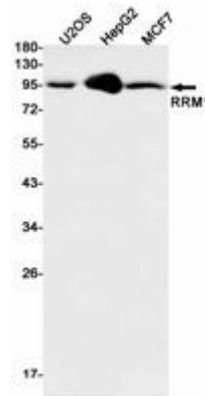
Constituents: PBS (without Mg²⁺ and Ca²⁺), pH 7.3 containing 50% glycerol, 0.5% BSA and 0.02% sodium azide

Research Areas: Epigenetics and Nuclear Signaling

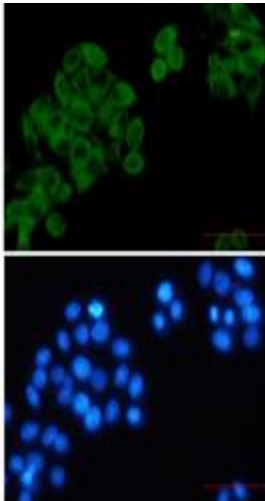
Storage & Shipping: Store at -20°C. Avoid repeated freezing and thawing



Immunohistochemistry analysis of paraffin-embedded Human lung cancer using RRM1 antibody. High-pressure and temperature Sodium Citrate pH 6.0 was used for antigen retrieval.



Western blot analysis of RRM1 in U2OS, HepG2, MCF-7 lysates using RRM1 antibody.



Immunocytochemistry analysis of RRM1 (green) in HeLa using RRM1 antibody, and DAPI (blue)