

## RRM1 RABBIT PAB

**Cat.#:** S210551

**Product Name:** Anti-RRM1 Rabbit Polyclonal Antibody

**Synonyms:** R1; RR1; RIR1

**UNIPROT ID:** P23921 (Gene Accession - BC006498 )

**Background:** This gene encodes one of two non-identical subunits that constitute ribonucleoside-diphosphate reductase, an enzyme essential for the production of deoxyribonucleotides prior to DNA synthesis in S phase of dividing cells. It is one of several genes located in the imprinted gene domain of 11p15.5, an important tumor-suppressor gene region. Alterations in this region have been associated with the Beckwith-Wiedemann syndrome, Wilms tumor, rhabdomyosarcoma, adrenocrotical carcinoma, and lung, ovarian, and breast cancer. This gene may play a role in malignancies and disease that involve this region.

**Immunogen:** Fusion protein of human RRM1

**Applications:** ELISA, WB, IHC

**Recommended Dilutions:** IHC: 25-100;WB: 200-1000;ELISA: 1000-2000

**Host Species:** Rabbit

**Clonality:** Rabbit Polyclonal

**Isotype:** Immunogen-specific rabbit IgG

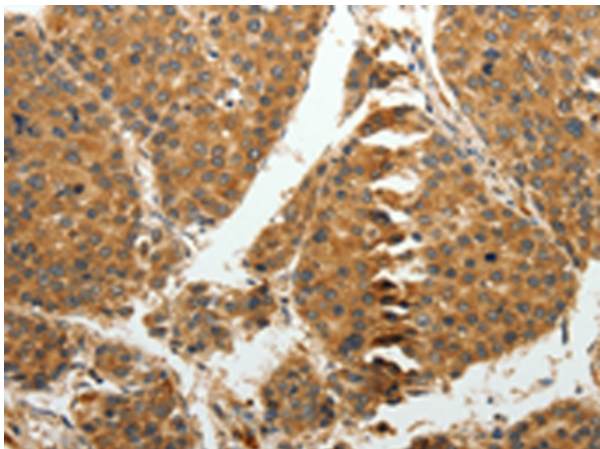
**Purification:** Antigen affinity purification

**Species Reactivity:** Human, Mouse

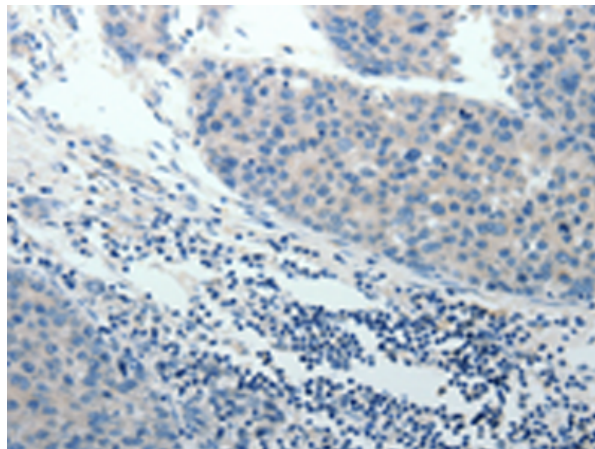
**Constituents:** PBS (without Mg<sup>2+</sup> and Ca<sup>2+</sup>), pH 7.4, 150 mM NaCl, 0.05% Sodium Azide and 40% glycerol

**Research Areas:** Epigenetics and Nuclear Signaling

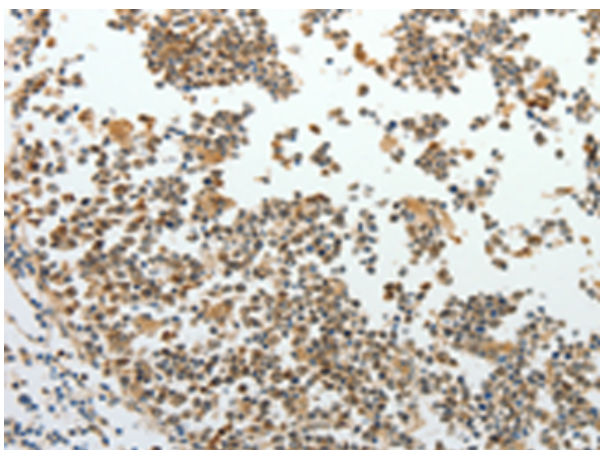
**Storage & Shipping:** Store at -20°C. Avoid repeated freezing and thawing



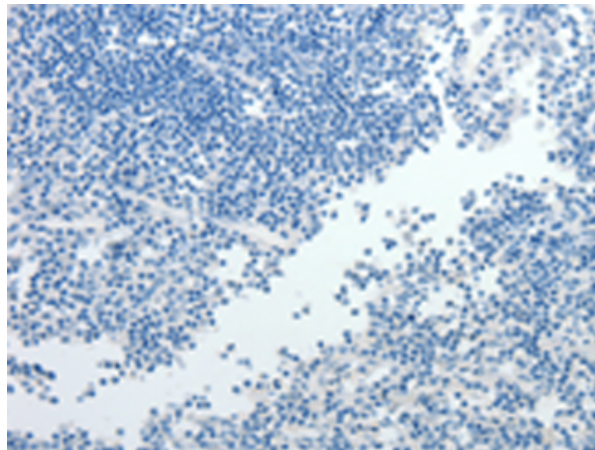
Immunohistochemistry analysis of paraffin embedded Human liver cancer tissue using 210551(RRM1 Antibody) at a dilution of 1/15(Cytoplasm).



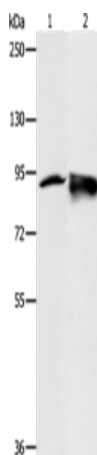
In comparison with the IHC on the left, the same paraffin-embedded Human liver cancer tissue is first treated with the fusion protein and then with 210551(Anti-RRM1 Antibody) at dilution 1/15.



The image on the left is immunohistochemistry of paraffin-embedded Human tonsil tissue using 210551(Anti-RRM1 Antibody) at a dilution of 1/15.



In comparison with the IHC on the left, the same paraffin-embedded Human tonsil tissue is first treated with fusion protein and then with D121160(Anti-RRM1 Antibody) at dilution 1/15.



Gel: 10%SDS-PAGE, Lysate: 50 µg;  
Lane 1-2: HeLa cells, 231 cells;  
Primary antibody: 210551(RRM1 Antibody) at dilution 1/200;  
Secondary antibody: Goat anti rabbit IgG at 1/8000 dilution;  
Exposure time: 1 minute



# Product Description

Pioneering GTPase and Oncogene Product Development since 2010

---