

RRM2 RABBIT PAB

Cat.#: N225931

Product Name: Anti-RRM2 Rabbit pAb

Synonyms: R2; RR2M

UNIPROT ID: P31350

Background: Provides the precursors necessary for DNA synthesis. Catalyzes the biosynthesis of deoxyribonucleotides from the corresponding ribonucleotides. Inhibits Wnt signaling.

Immunogen: A synthesized peptide derived from human RRM2

Applications: WB, ICC/IF, IP

Recommended Dilutions: WB: 1/500-1/1000 IF: 1/50-1/200 IP: 1/20

Host Species: Rabbit

Clonality: Rabbit Polyclonal

Clone ID: -

MW: Calculated MW: 45 kDa; Observed MW: 45 kDa

Isotype: IgG

Purification: Affinity Chromatography

Species Reactivity: Human

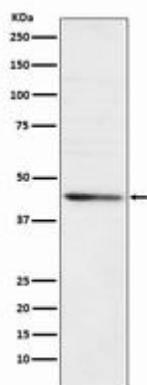
Conjugation: Unconjugated

Modification: Unmodified

Constituents: PBS (without Mg²⁺ and Ca²⁺), pH 7.3 containing 50% glycerol, 0.5% BSA and 0.02% sodium azide

Research Areas: Epigenetics and Nuclear Signaling

Storage & Shipping: Store at -20°C. Avoid repeated freezing and thawing



Western blot analysis of RRM2 in HeLa lysates using RRM2 antibody.



Product Description

Pioneering GTPase and Oncogene Product Development since 2010
