

## RRP8 RABBIT PAB

**Cat.#:** S215980

**Product Name:** Anti-RRP8 Rabbit Polyclonal Antibody

**Synonyms:** NML; KIAA0409

**UNIPROT ID:** O43159 (Gene Accession - NP\_056139 )

**Background:** Essential component of the eNoSC (energy-dependent nucleolar silencing) complex, a complex that mediates silencing of rDNA in response to intracellular energy status and acts by recruiting histone-modifying enzymes. The eNoSC complex is able to sense the energy status of cell: upon glucose starvation, elevation of NAD<sup>+</sup>/NADP<sup>+</sup> ratio activates SIRT1, leading to histone H3 deacetylation followed by dimethylation of H3 at 'Lys-9' (H3K9me<sub>2</sub>) by SUV39H1 and the formation of silent chromatin in the rDNA locus. In the complex, RRP8 binds to H3K9me<sub>2</sub> and probably acts as a methyltransferase. Its substrates are however unknown.

**Immunogen:** Synthetic peptide of human RRP8

**Applications:** ELISA, IHC

**Recommended Dilutions:** IHC: 50-300; ELISA: 5000-10000

**Host Species:** Rabbit

**Clonality:** Rabbit Polyclonal

**Isotype:** Immunogen-specific rabbit IgG

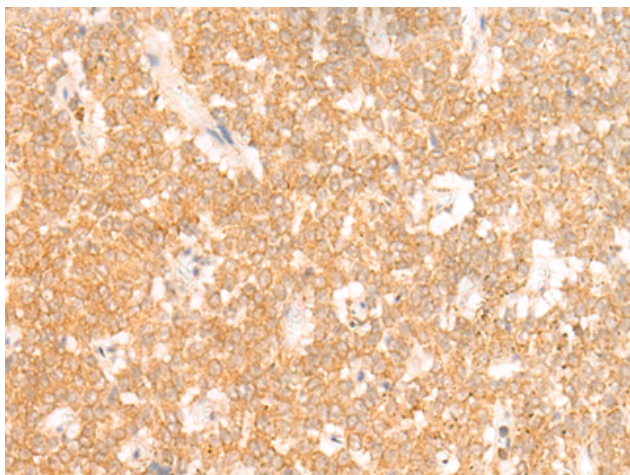
**Purification:** Antigen affinity purification

**Species Reactivity:** Human, Mouse, Rat

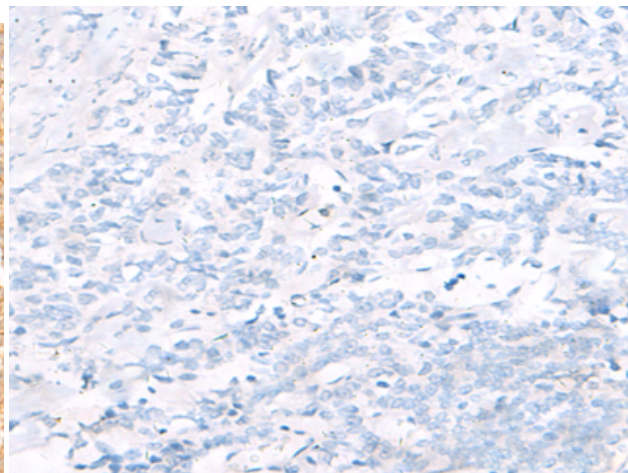
**Constituents:** PBS (without Mg<sup>2+</sup> and Ca<sup>2+</sup>), pH 7.4, 150 mM NaCl, 0.05% Sodium Azide and 40% glycerol

**Research Areas:** Cell Biology

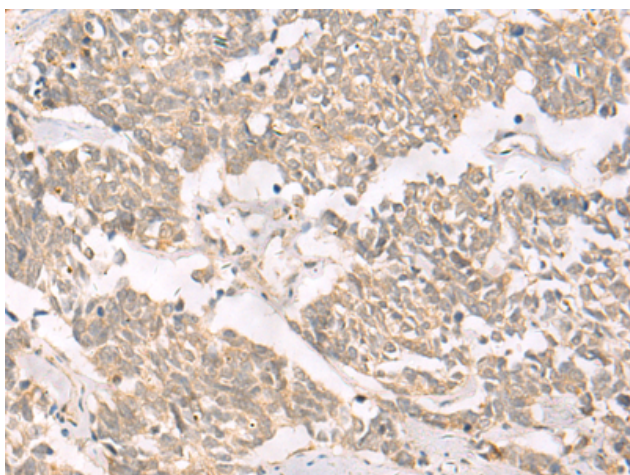
**Storage & Shipping:** Store at -20°C. Avoid repeated freezing and thawing



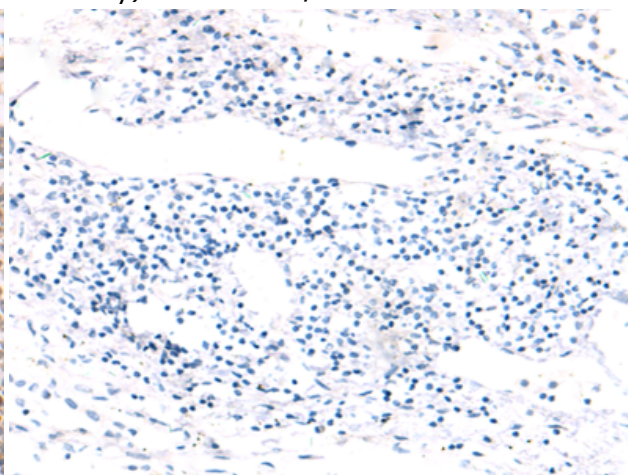
Immunohistochemistry analysis of paraffin embedded Human ovarian cancer tissue using 215980(RRP8 Antibody) at a dilution of 1/50(Cytoplasm and Nucleus).



In comparison with the IHC on the left, the same paraffin-embedded Human ovarian cancer tissue is first treated with the synthetic peptide and then with 215980(Anti-RRP8 Antibody) at dilution 1/50.



The image on the left is immunohistochemistry of paraffin-embedded Human lung cancer tissue using 215980(Anti-RRP8 Antibody) at a dilution of 1/50.



In comparison with the IHC on the left, the same paraffin-embedded Human lung cancer tissue is first treated with synthetic peptide and then with D164224(Anti-RRP8 Antibody) at dilution 1/50.