

RRP8 RABBIT PAB

Cat.#: S219130

Product Name: Anti-RRP8 Rabbit Polyclonal Antibody

Synonyms: NML; KIAA0409

UNIPROT ID: O43159 (Gene Accession - BC001071)

Background: Essential component of the eNoSC (energy-dependent nucleolar silencing) complex, a complex that mediates silencing of rDNA in response to intracellular energy status and acts by recruiting histone-modifying enzymes. The eNoSC complex is able to sense the energy status of cell: upon glucose starvation, elevation of NAD⁺/NADP⁺ ratio activates SIRT1, leading to histone H3 deacetylation followed by dimethylation of H3 at 'Lys-9' (H3K9me₂) by SUV39H1 and the formation of silent chromatin in the rDNA locus. In the complex RRP8 binds to H3K9me₂ and probably acts as a methyltransferase. Its substrates are however unknown.

Immunogen: Fusion protein of human RRP8

Applications: ELISA, WB, IHC

Recommended Dilutions: IHC: 50-300;WB: 500-2000;ELISA: 5000-10000

Host Species: Rabbit

Clonality: Rabbit Polyclonal

Isotype: Immunogen-specific rabbit IgG

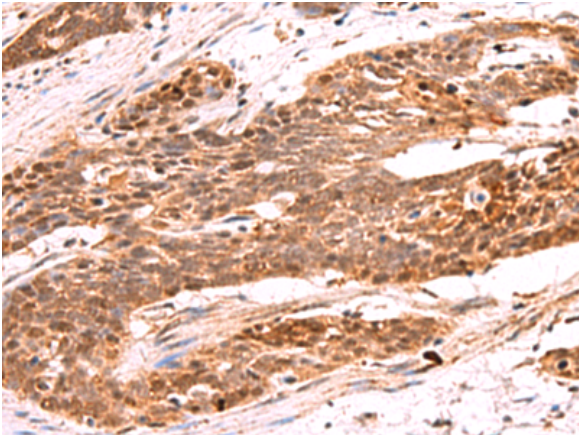
Purification: Antigen affinity purification

Species Reactivity: Human, Mouse, Rat

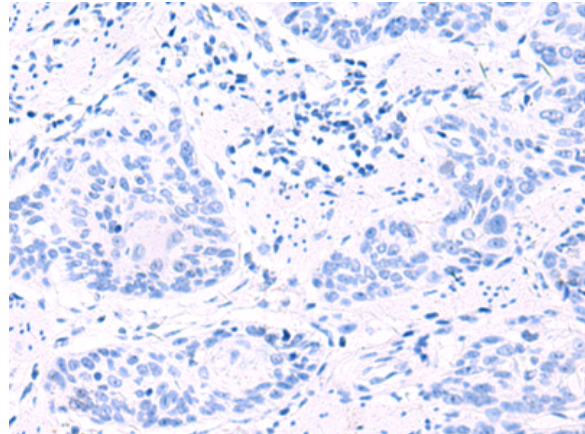
Constituents: PBS (without Mg²⁺ and Ca²⁺), pH 7.4, 150 mM NaCl, 0.05% Sodium Azide and 40% glycerol

Research Areas: Cell Biology

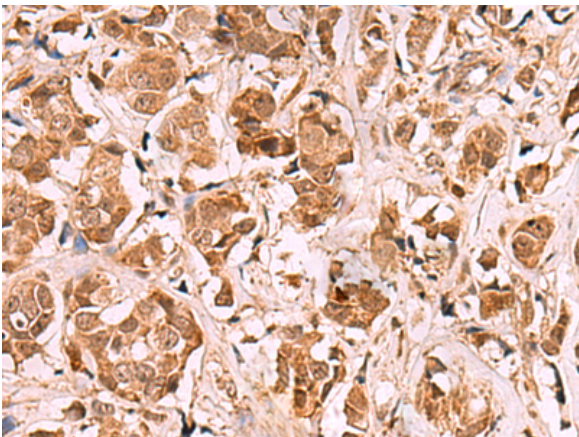
Storage & Shipping: Store at -20°C. Avoid repeated freezing and thawing



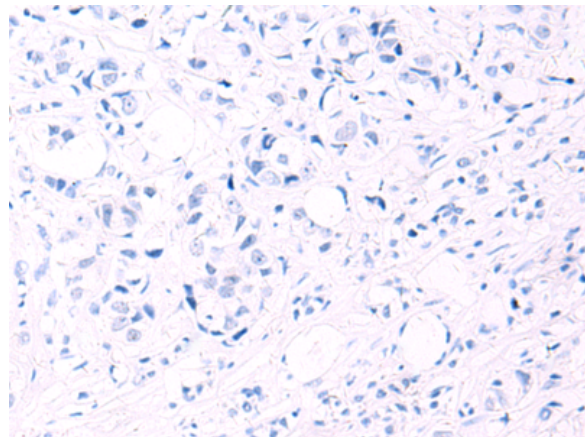
Immunohistochemistry analysis of paraffin embedded Human esophagus cancer tissue using 219130(RRP8 Antibody) at a dilution of 1/80(Cytoplasm and Nucleus).



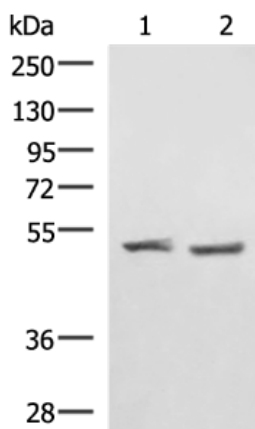
In comparison with the IHC on the left, the same paraffin-embedded Human esophagus cancer tissue is first treated with the fusion protein and then with 219130(Anti-RRP8 Antibody) at dilution 1/80.



The image on the left is immunohistochemistry of paraffin-embedded Human breast cancer tissue using 219130(Anti-RRP8 Antibody) at a dilution of 1/80.



In comparison with the IHC on the left, the same paraffin-embedded Human breast cancer tissue is first treated with fusion protein and then with D225896(Anti-RRP8 Antibody) at dilution 1/80.



Gel: 8%SDS-PAGE, Lysate: 40 µg;
 Lane 1-2: Human cerebella tissue, K562 cell lysates;
 Primary antibody: 219130(RRP8 Antibody) at dilution 1/1000;
 Secondary antibody: HRP-conjugated Goat anti rabbit IgG at 1/5000 dilution;
 Exposure time: 30 seconds



Product Description

Pioneering GTPase and Oncogene Product Development since 2010
