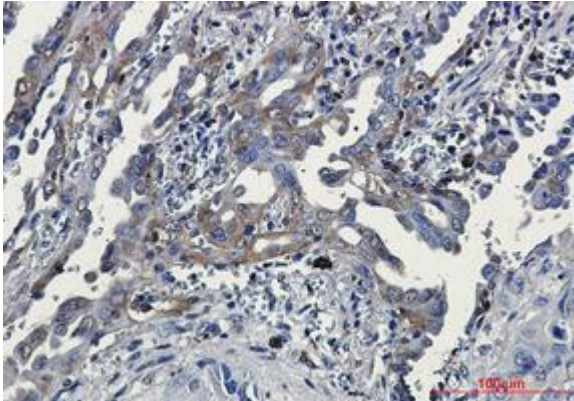
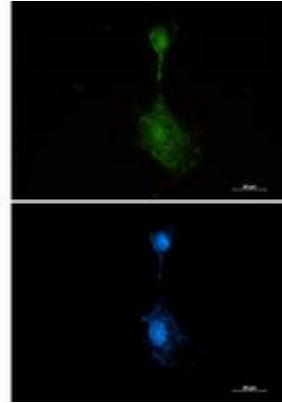


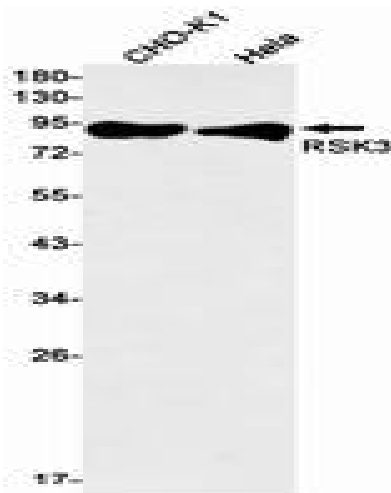
RSK3 RABBIT MAB**Cat.#:** N263114**Product Name:** Anti-RSK3 Rabbit Monoclonal Antibody**Synonyms:** RPS6KA2; MAPKAPK1C; RSK3; Ribosomal protein S6 kinase alpha-2; S6K-alpha-2; 90 kDa ribosomal protein S6 kinase 2; p90-RSK 2; p90RSK2; MAP kinase-activated protein kinase 1c; MAPK-activated protein kinase 1c; MAPKAP kinase 1c; MAPKAPK-1c; Ri**UNIPROT ID:** Q15349**Background:** This gene encodes a member of the RSK (ribosomal S6 kinase) family of serine/threonine kinases. This kinase contains 2 non-identical kinase catalytic domains and phosphorylates various substrates, including members of the mitogen-activated kinase (MAPK) signalling pathway. The activity of this protein has been implicated in controlling cell growth and differentiation. Alternate transcriptional splice variants, encoding different isoforms, have been characterized.**Immunogen:** A synthetic peptide of human RSK3**Applications:** WB,IHC-F,IHC-P,ICC/IF,IP**Recommended Dilutions:** WB: 1/500-1/1000 IHC: 1/50-1/100 IF: 1/50-1/200 IP: 1/20**Host Species:** Rabbit**Clonality:** Rabbit Monoclonal**Clone ID:** R05-5E4**MW:** Calculated MW: 83 kDa; Observed MW: 90 kDa**Isotype:** IgG**Purification:** Affinity Purified**Species Reactivity:** Human,Hamster**Conjugation:** Unconjugated**Modification:** Unmodified**Constituents:** PBS (without Mg²⁺ and Ca²⁺), pH 7.3 containing 50% glycerol, 0.5% BSA and 0.02% sodium azide**Research Areas:** Epigenetics and Nuclear Signaling**Storage & Shipping:** Store at -20°C. Avoid repeated freezing and thawing



Immunohistochemistry analysis of paraffin-embedded Human lung cancer tissue using RSK3 antibody. High-pressure and temperature Sodium Citrate pH 6.0 was used for antigen retrieval.



Immunocytochemistry analysis of RSK3 (green) in U87-MG using RSK3 antibody, and DAPI (blue).



Western blot analysis of RSK3 in CHO-K1, HeLa lysates using RSK3 antibody.