

RTKN2 RABBIT PAB

Cat.#: S219066

Product Name: Anti-RTKN2 Rabbit Polyclonal Antibody

Synonyms: PLEKHK1; bA531F24.1

UNIPROT ID: Q8IZC4 (Gene Accession - BC025765)

Background: May play an important role in lymphopoiesis.

Immunogen: Fusion protein of human RTKN2

Applications: ELISA, IHC

Recommended Dilutions: IHC: 50-300; ELISA: 5000-10000

Host Species: Rabbit

Clonality: Rabbit Polyclonal

Isotype: Immunogen-specific rabbit IgG

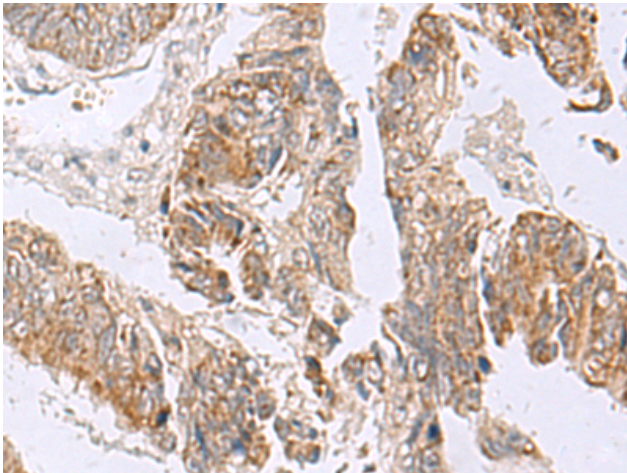
Purification: Antigen affinity purification

Species Reactivity: Human

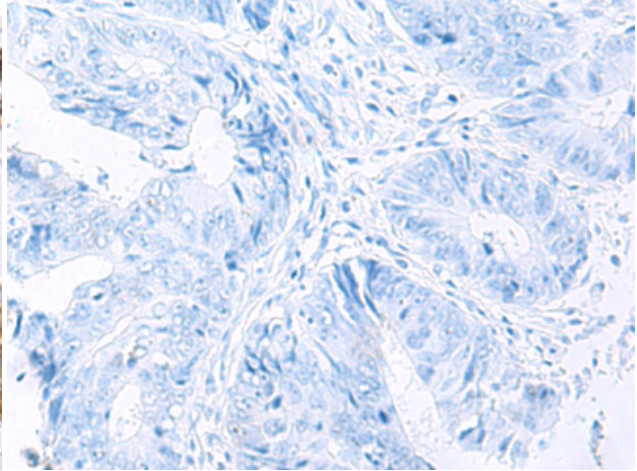
Constituents: PBS (without Mg²⁺ and Ca²⁺), pH 7.4, 150 mM NaCl, 0.05% Sodium Azide and 40% glycerol

Research Areas: Cancer

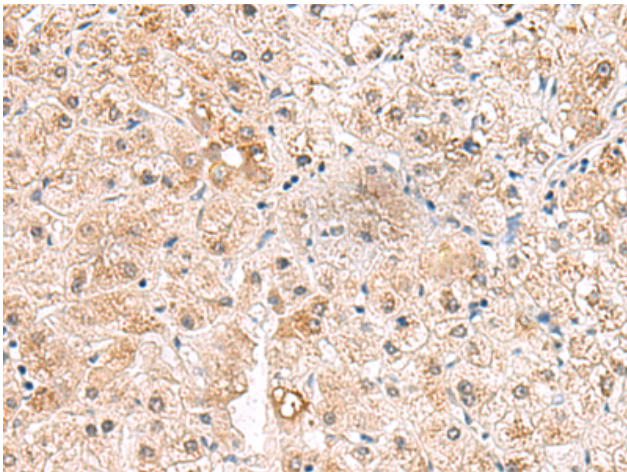
Storage & Shipping: Store at -20°C. Avoid repeated freezing and thawing



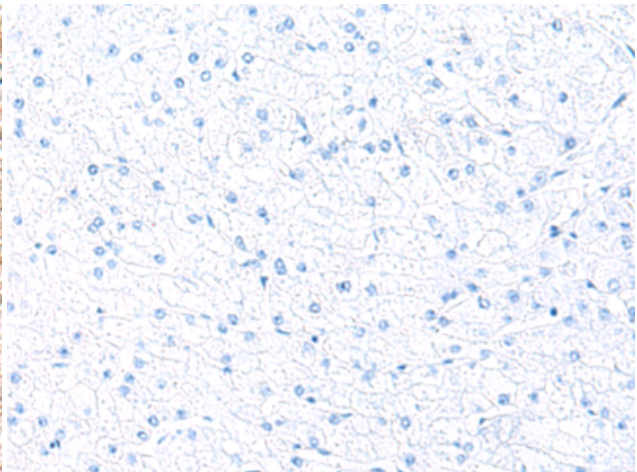
Immunohistochemistry analysis of paraffin embedded Human colorectal cancer tissue using 219066(RTKN2 Antibody) at a dilution of 1/75(Cytoplasm).



In comparison with the IHC on the left, the same paraffin-embedded Human colorectal cancer tissue is first treated with the fusion protein and then with 219066(Anti-RTKN2 Antibody) at dilution 1/75.



The image on the left is immunohistochemistry of paraffin-embedded Human liver cancer tissue using 219066(Anti-RTKN2 Antibody) at a dilution of 1/75.



In comparison with the IHC on the left, the same paraffin-embedded Human liver cancer tissue is first treated with fusion protein and then with D225757(Anti-RTKN2 Antibody) at dilution 1/75.