

RTN4IP1 RABBIT PAB

Cat.#: S221767

Product Name: Anti-RTN4IP1 Rabbit Polyclonal Antibody

Synonyms: NIMP; OPA10

UNIPROT ID: Q8WWV3 (Gene Accession - NP_116119)

Background: This gene encodes a mitochondrial protein that interacts with reticulon 4, which is a potent inhibitor of regeneration following spinal cord injury. This interaction may be important for reticulon-induced inhibition of neurite growth. Mutations in this gene can cause optic atrophy 10, with or without ataxia, mental retardation, and seizures. There is a pseudogene for this gene on chromosome 12. Alternative splicing results in multiple transcript variants.

Immunogen: Synthetic peptide of human RTN4IP1

Applications: ELISA, IHC

Recommended Dilutions: IHC: 25-100; ELISA: 5000-10000

Host Species: Rabbit

Clonality: Rabbit Polyclonal

Isotype: Immunogen-specific rabbit IgG

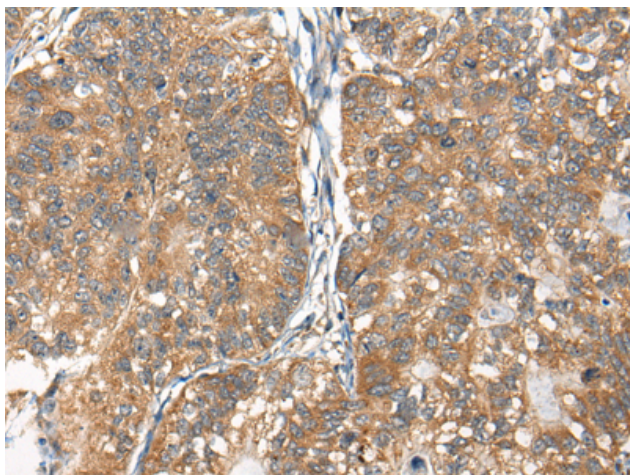
Purification: Antigen affinity purification

Species Reactivity: Human, Mouse

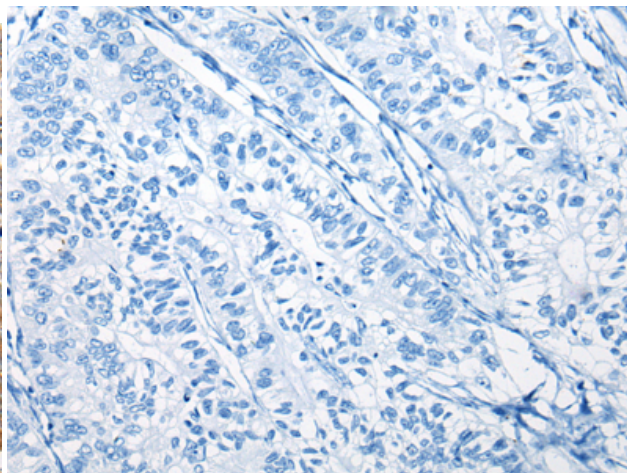
Constituents: PBS (without Mg²⁺ and Ca²⁺), pH 7.4, 150 mM NaCl, 0.05% Sodium Azide and 40% glycerol

Research Areas: Metabolism, Cell Biology

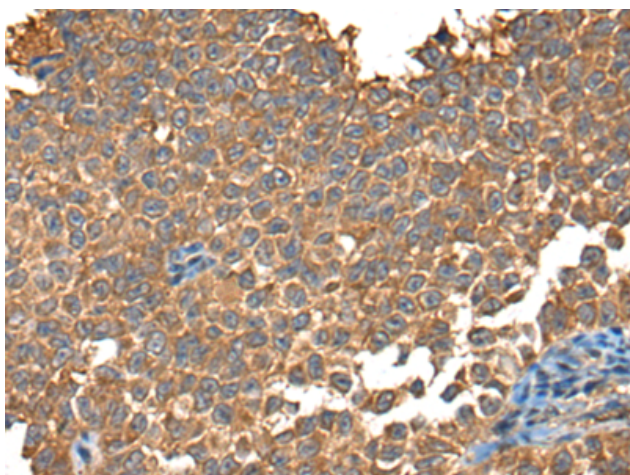
Storage & Shipping: Store at -20°C. Avoid repeated freezing and thawing



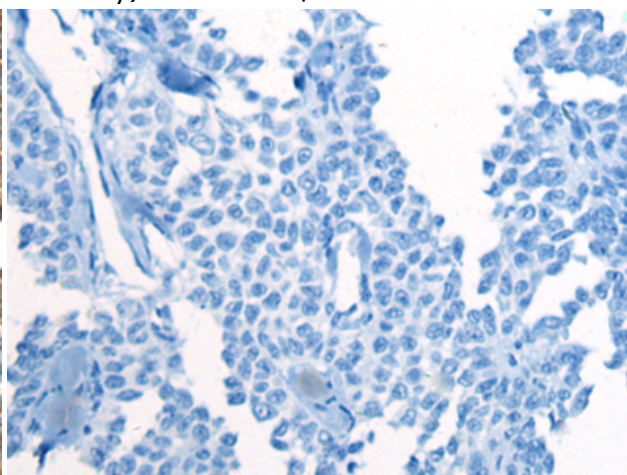
Immunohistochemistry analysis of paraffin embedded Human gastric cancer tissue using 221767(RTN4IP1 Antibody) at a dilution of 1/25(Cytoplasm).



In comparison with the IHC on the left, the same paraffin-embedded Human gastric cancer tissue is first treated with the synthetic peptide and then with 221767(Anti-RTN4IP1 Antibody) at dilution 1/25.



The image on the left is immunohistochemistry of paraffin-embedded Human ovarian cancer tissue using 221767(Anti-RTN4IP1 Antibody) at a dilution of 1/25.



In comparison with the IHC on the left, the same paraffin-embedded Human ovarian cancer tissue is first treated with synthetic peptide and then with D263503(Anti-RTN4IP1 Antibody) at dilution 1/25.