

RTP4 RABBIT PAB

Cat.#: S219282

Product Name: Anti-RTP4 Rabbit Polyclonal Antibody

Synonyms: IFRG28; Z3CXXC4

UNIPROT ID: Q96DX8 (Gene Accession - BC013161)

Background: Probable chaperone protein which facilitates trafficking and functional cell surface expression of some G-protein coupled receptors (GPCRs). Promotes functional expression of the bitter taste receptor TAS2R16 (PubMed:16720576). Also promotes functional expression of the opioid receptor heterodimer OPRD1-OPRM1 (By similarity).

Immunogen: Fusion protein of human RTP4

Applications: ELISA, IHC

Recommended Dilutions: IHC: 50-200; ELISA: 5000-10000

Host Species: Rabbit

Clonality: Rabbit Polyclonal

Isotype: Immunogen-specific rabbit IgG

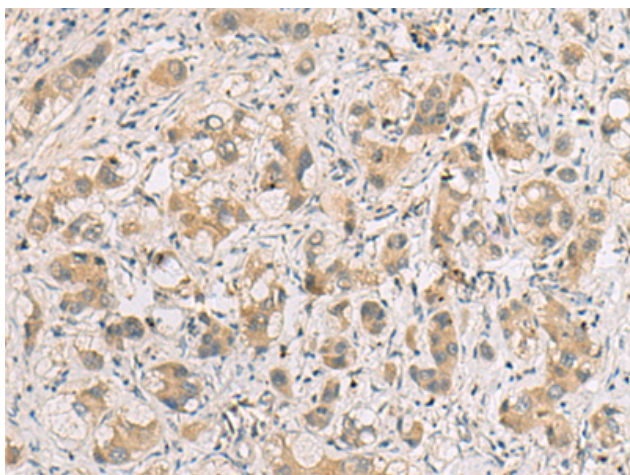
Purification: Antigen affinity purification

Species Reactivity: Human

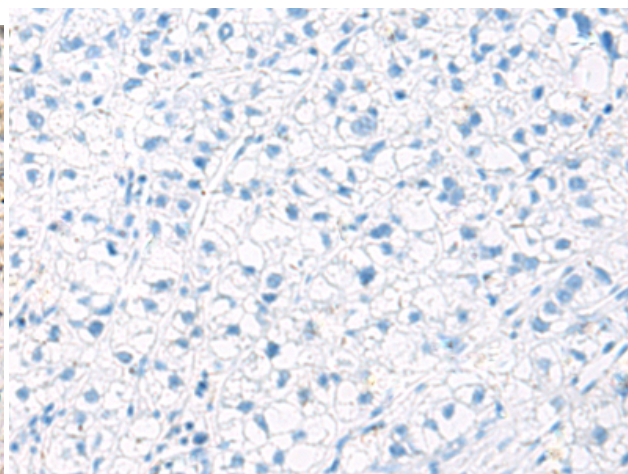
Constituents: PBS (without Mg²⁺ and Ca²⁺), pH 7.4, 150 mM NaCl, 0.05% Sodium Azide and 40% glycerol

Research Areas: Neuroscience

Storage & Shipping: Store at -20°C. Avoid repeated freezing and thawing



Immunohistochemistry analysis of paraffin embedded Human liver cancer tissue using 219282(RTP4 Antibody) at a dilution of 1/80(Cytoplasm).



In comparison with the IHC on the left, the same paraffin-embedded Human liver cancer tissue is first treated with the fusion protein and then with 219282(Anti-RTP4 Antibody) at dilution 1/80.