

RUVBL1 RABBIT PAB

Cat.#: S218721

Product Name: Anti-RUVBL1 Rabbit Polyclonal Antibody

Synonyms: RVBI; TIHI; ECP54; TIP49; ECP-54; INO80H; NMP238; PONTIN; TIP49A; NMP 238; Pontin52

UNIPROT ID: Q9Y265 (Gene Accession - BC002993)

Background: This gene encodes a protein that has both DNA-dependent ATPase and DNA helicase activities and belongs to the ATPases associated with diverse cellular activities (AAA+) protein family. The encoded protein associates with several multisubunit transcriptional complexes and with protein complexes involved in both ATP-dependent remodeling and histone modification. Alternate splicing results in multiple transcript variants.

Immunogen: Fusion protein of human RUVBL1

Applications: ELISA, WB, IHC

Recommended Dilutions: IHC: 50-300;WB: 1000-5000;ELISA: 5000-10000

Host Species: Rabbit

Clonality: Rabbit Polyclonal

Isotype: Immunogen-specific rabbit IgG

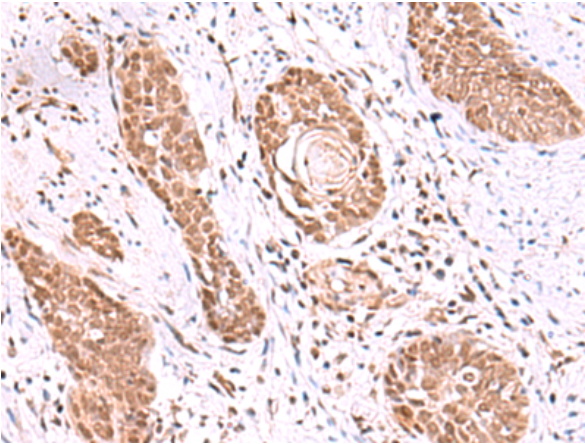
Purification: Antigen affinity purification

Species Reactivity: Human, Mouse, Rat

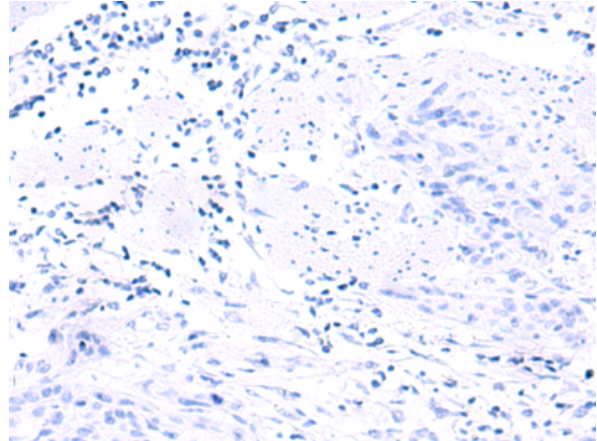
Constituents: PBS (without Mg²⁺ and Ca²⁺), pH 7.4, 150 mM NaCl, 0.05% Sodium Azide and 40% glycerol

Research Areas: Epigenetics and Nuclear Signaling

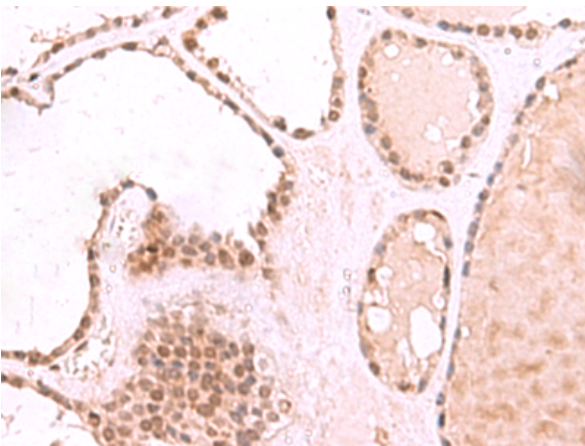
Storage & Shipping: Store at -20°C. Avoid repeated freezing and thawing



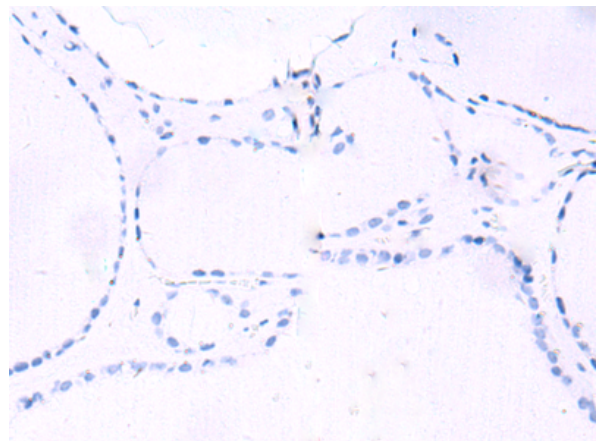
Immunohistochemistry analysis of paraffin embedded Human esophagus cancer tissue using 218721(RUVBL1 Antibody) at a dilution of 1/85(Nucleus).



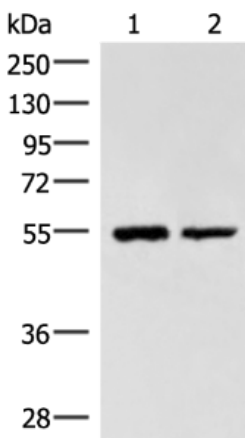
In comparison with the IHC on the left, the same paraffin-embedded Human esophagus cancer tissue is first treated with the fusion protein and then with 218721(Anti-RUVBL1 Antibody) at dilution 1/85.



The image on the left is immunohistochemistry of paraffin-embedded Human thyroid cancer tissue using 218721(Anti-RUVBL1 Antibody) at a dilution of 1/85.



In comparison with the IHC on the left, the same paraffin-embedded Human thyroid cancer tissue is first treated with fusion protein and then with D225060(Anti-RUVBL1 Antibody) at dilution 1/85.



Gel: 8%SDS-PAGE, Lysate: 40 µg;
Lane 1-2: Raji and K562 cell lysates;
Primary antibody: 218721(RUVBL1 Antibody) at dilution 1/2200;
Secondary antibody: Goat anti rabbit IgG at 1/8000 dilution;
Exposure time: 7 seconds



Product Description

Pioneering GTPase and Oncogene Product Development since 2010
