

RWDD1 RABBIT PAB

Cat.#: S218206

Product Name: Anti-RWDD1 Rabbit Polyclonal Antibody

Synonyms: CGI-24; PTD013

UNIPROT ID: Q9H446 (Gene Accession - BC015802)

Background: Protects DRG2 from proteolytic degradation.

Immunogen: Fusion protein of human RWDD1

Applications: ELISA, IHC

Recommended Dilutions: IHC: 150-300; ELISA: 5000-10000

Host Species: Rabbit

Clonality: Rabbit Polyclonal

Isotype: Immunogen-specific rabbit IgG

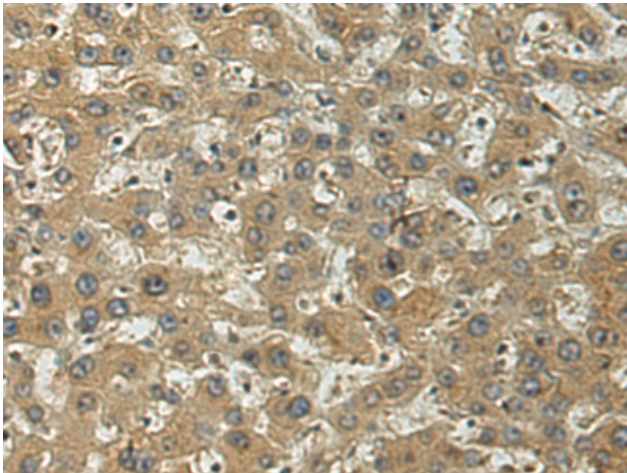
Purification: Antigen affinity purification

Species Reactivity: Human, Mouse, Rat

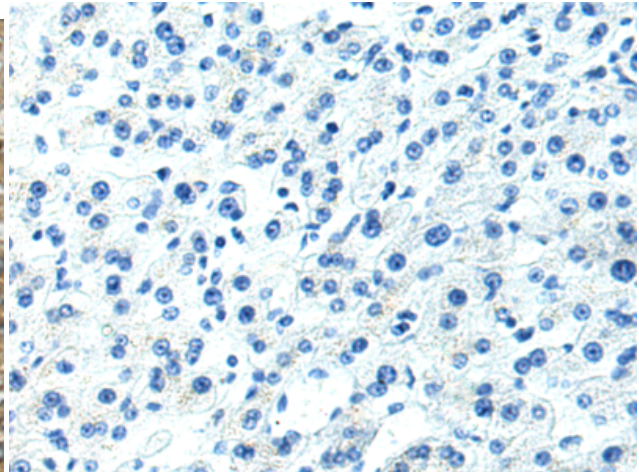
Constituents: PBS (without Mg²⁺ and Ca²⁺), pH 7.4, 150 mM NaCl, 0.05% Sodium Azide and 40% glycerol

Research Areas: Cell Biology

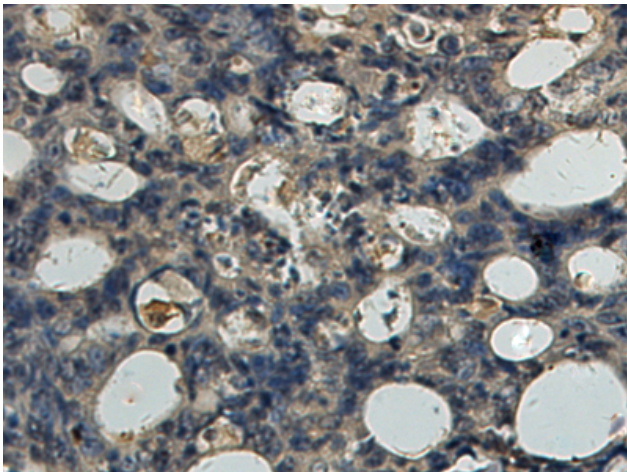
Storage & Shipping: Store at -20°C. Avoid repeated freezing and thawing



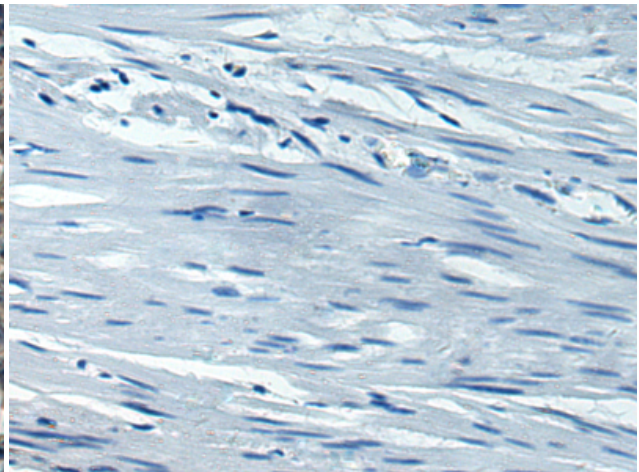
Immunohistochemistry analysis of paraffin-embedded Human liver cancer tissue using 218206(RWDD1 Antibody) at a dilution of 1/150(Cytoplasm).



In comparison with the IHC on the left, the same paraffin-embedded Human liver cancer tissue is first treated with the fusion protein and then with 218206(Anti-RWDD1 Antibody) at dilution 1/150.



The image on the left is immunohistochemistry of paraffin-embedded Human colorectal cancer tissue using 218206(Anti-RWDD1 Antibody) at a dilution of 1/150.



In comparison with the IHC on the left, the same paraffin-embedded Human colorectal cancer tissue is first treated with fusion protein and then with D223948(Anti-RWDD1 Antibody) at dilution 1/150.