

S100 ALPHA6 RABBIT MAB

Cat.#: N263538

Product Name: Anti-S100 alpha6 Rabbit Monoclonal Antibody

Synonyms: S100 alpha6; Protein S100-A6; Calcyclin; MLN 4; PRA; CACY; CABP; 5B10

UNIPROT ID: P06703

Background: S100A6 (calcyclin) is involved in a number of cellular processes, including exocytosis and cell cycle regulation. In addition, S100A6 interacts with a number of proteins such as SIP, GAPDH, and annexins in a calcium-dependent fashion. Research studies demonstrate that a down regulation of corresponding S100A6 gene expression causes a decrease in cell proliferation.

Immunogen: Recombinant protein of human S100 alpha 6/PRA

Applications: WB, ICC/IF, IP

Recommended Dilutions: WB: 1/500-1/1000 IF: 1/50-1/200 IP: 1/20

Host Species: Rabbit

Clonality: Rabbit Monoclonal

Clone ID: R01-8A4

MW: Calculated MW: 10 kDa; Observed MW: 10 kDa

Isotype: IgG

Purification: Affinity Purified

Species Reactivity: Human, Mouse

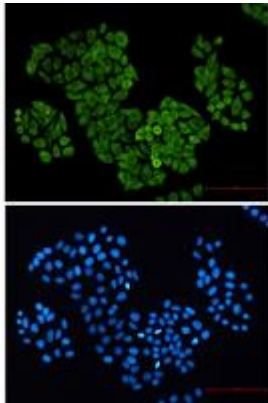
Conjugation: Unconjugated

Modification: Unmodified

Constituents: PBS (without Mg²⁺ and Ca²⁺), pH 7.3 containing 50% glycerol, 0.5% BSA and 0.02% sodium azide

Research Areas: Cell Biology

Storage & Shipping: Store at -20°C. Avoid repeated freezing and thawing



Immunocytochemistry analysis of S100 alpha 6/PRA (green) in HeLa using S100 alpha 6/PRA antibody, and DAPI (blue)



Western blot analysis of S100 alpha 6/PRA in 3T3 lysates using S100 alpha 6/PRA antibody.



Western blot analysis of S100 alpha 6/PRA in HeLa, A549 lysates using S100 alpha 6/PRA antibody.