

S100A2 RABBIT PAB

Cat.#: S219524

Product Name: Anti-S100A2 Rabbit Polyclonal Antibody

Synonyms: CAN19; S100L

UNIPROT ID: P29034 (Gene Accession - BC002829)

Background: The protein encoded by this gene is a member of the S100 family of proteins containing 2 EF-hand calcium-binding motifs. S100 proteins are localized in the cytoplasm and/or nucleus of a wide range of cells, and involved in the regulation of a number of cellular processes such as cell cycle progression and differentiation. S100 genes include at least 13 members which are located as a cluster on chromosome 1q21. This protein may have a tumor suppressor function. Chromosomal rearrangements and altered expression of this gene have been implicated in breast cancer.

Immunogen: Fusion protein of human S100A2

Applications: ELISA, WB, IHC

Recommended Dilutions: IHC: 100-300;WB: 1000-5000;ELISA: 5000-10000

Host Species: Rabbit

Clonality: Rabbit Polyclonal

Isotype: Immunogen-specific rabbit IgG

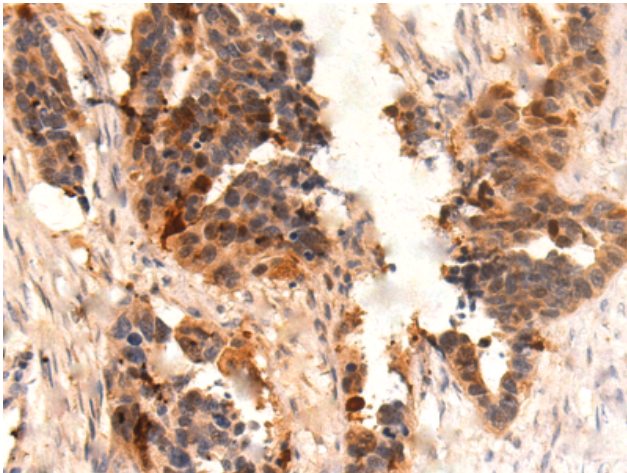
Purification: Antigen affinity purification

Species Reactivity: Human

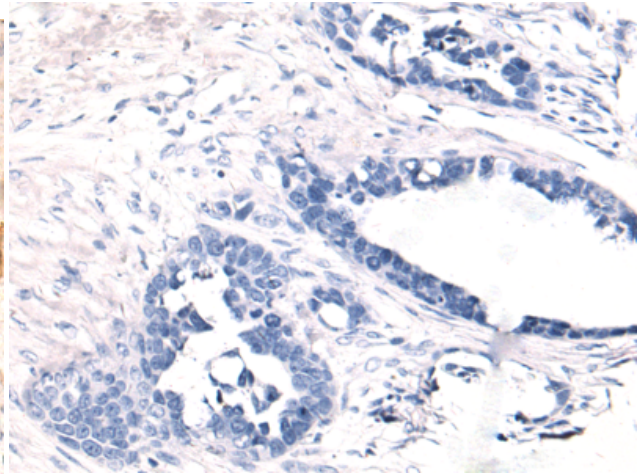
Constituents: PBS (without Mg²⁺ and Ca²⁺), pH 7.4, 150 mM NaCl, 0.05% Sodium Azide and 40% glycerol

Research Areas: Signal Transduction, Cell Biology

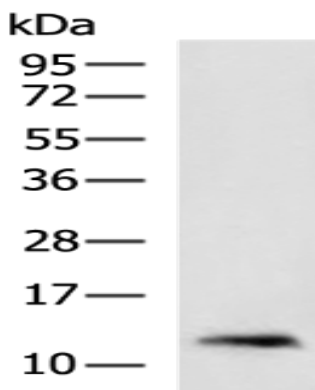
Storage & Shipping: Store at -20°C. Avoid repeated freezing and thawing



Immunohistochemistry analysis of paraffin embedded Human colorectal cancer tissue using 219524(S100A2 Antibody) at a dilution of 1/80(Cytoplasm and Nucleus).



In comparison with the IHC on the left, the same paraffin-embedded Human colorectal cancer tissue is first treated with the fusion protein and then with 219524(Anti-S100A2 Antibody) at dilution 1/80.



Gel: 12%SDS-PAGE, Lysate: 40 μ g;
Lane: HeLa cell lysate;
Primary antibody: 219524(S100A2 Antibody) at dilution 1/2000;
Secondary antibody: HRP-conjugated Goat anti rabbit IgG at 1/5000 dilution;
Exposure time: 40 seconds