

## S100A4 (3D10) MOUSE MAB

**Cat.#:** N261155

**Product Name:** Anti-S100A4 (3D10) Mouse Monoclonal Antibody

**Synonyms:** 18A2; 42A; calcium Placental protein; Calvasculin; CAPL; Fibroblast specific protein 1; Fibroblast specific protein; FSPI; Leukemia multidrug resistance associated protein; Malignant transformation suppression 1; Metastasin; MTS1; OTTHUMP00000015467; OTTHUMP00000015468; P9KA; PEL98; Placental calcium-binding protein; Protein Mts1; Protein S100 A4; Protein S100-A4; S100 calcium binding protein A4 (calcium protein; calvasculin; metastasin; murine placental homolog); S100 calcium binding protein A4; S100 calcium-binding protein A4; S100a4; S10A4\_HUMAN.

**UNIPROT ID:** P26447

**Background:** The protein encoded by this gene is a member of the S100 family of proteins containing 2 EF-hand calcium-binding motifs. This protein may function in motility, invasion, and tubulin polymerization. Chromosomal rearrangements and altered expression of this gene have been implicated in tumor metastasis.

**Immunogen:** Recombinant human S100A4 protein.

**Applications:** WB,IP

**Recommended Dilutions:** WB: 1/500-1/1000 IP: 1/20

**Host Species:** Mouse

**Clonality:** Mouse Monoclonal

**Clone ID:** 3D10-B4-D10

**MW:** Calculated MW: 12 kDa; Observed MW: 12 kDa

**Isotype:** IgG1

**Purification:** Affinity Purified

**Species Reactivity:** Human

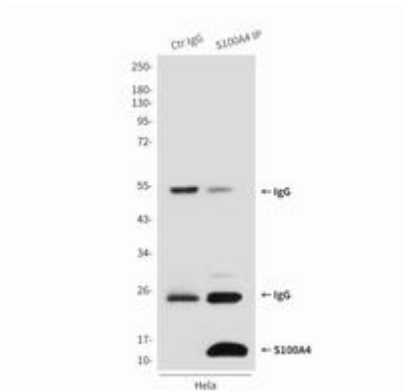
**Conjugation:** Unconjugated

**Modification:** Unmodified

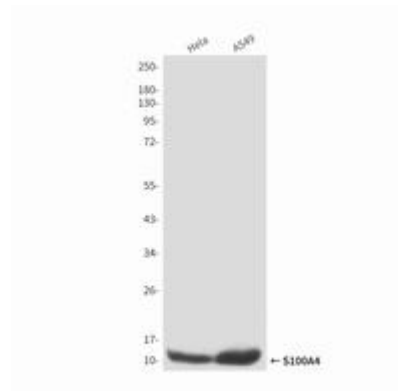
**Constituents:** PBS (without Mg<sup>2+</sup> and Ca<sup>2+</sup>), pH 7.3 containing 50% glycerol, 0.5% BSA and 0.02% sodium azide

**Research Areas:** Cardiovascular

**Storage & Shipping:** Store at -20°C. Avoid repeated freezing and thawing



Immunoprecipitation analysis of S100A4 (3D10) in HeLa lysates using S100A4 antibody.



Western blot analysis of S100A4 in HeLa and A549 lysates using S100A4 antibody.