

## S100A4 RABBIT PAB

**Cat.#:** S210026

**Product Name:** Anti-S100A4 Rabbit Polyclonal Antibody

**Synonyms:** 42A, 18A2, CAPL, FSPI, MTS1, P9KA, PEL98

**UNIPROT ID:** P26447 (Gene Accession - BC016300 )

**Background:** The protein encoded by this gene is a member of the S100 family of proteins containing 2 EF-hand calcium-binding motifs. S100 proteins are localized in the cytoplasm and/or nucleus of a wide range of cells, and involved in the regulation of a number of cellular processes such as cell cycle progression and differentiation. S100 genes include at least 13 members which are located as a cluster on chromosome 1q21. This protein may function in motility, invasion, and tubulin polymerization. Chromosomal rearrangements and altered expression of this gene have been implicated in tumor metastasis. Multiple alternatively spliced variants, encoding the same protein, have been identified.

**Immunogen:** Fusion protein of human S100A4

**Applications:** ELISA, IHC

**Recommended Dilutions:** IHC: 100-200; ELISA: 500-5000

**Host Species:** Rabbit

**Clonality:** Rabbit Polyclonal

**Isotype:** Immunogen-specific rabbit IgG

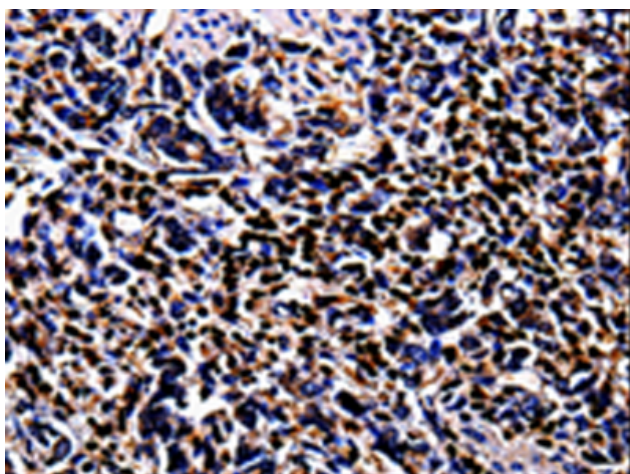
**Purification:** Antigen affinity purification

**Species Reactivity:** Human, Mouse, Rat

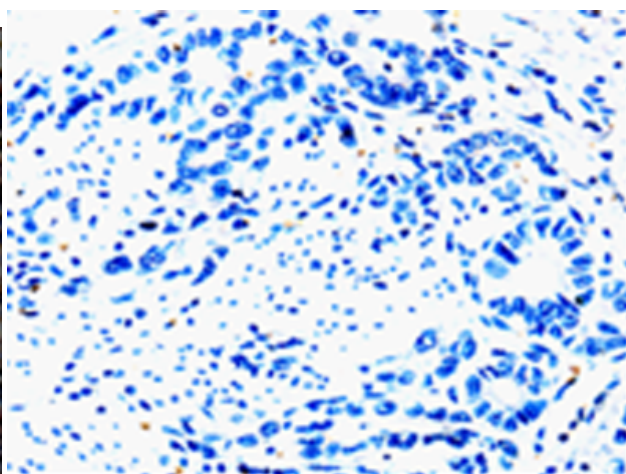
**Constituents:** PBS (without Mg<sup>2+</sup> and Ca<sup>2+</sup>), pH 7.4, 150 mM NaCl, 0.05% Sodium Azide and 40% glycerol

**Research Areas:** Signal Transduction, Cardiovascular

**Storage & Shipping:** Store at -20°C. Avoid repeated freezing and thawing



Immunohistochemistry analysis of paraffin embedded Human stomach cancer tissue using 210026(S100A4 Antibody) at a dilution of 1/100(Cytoplasm, Nucleus).



In comparison with the IHC on the left, the same paraffin-embedded Human stomach cancer tissue is first treated with the fusion protein and then with 210026(Anti-S100A4 Antibody) at dilution 1/100.



# Product Description

Pioneering GTPase and Oncogene Product Development since 2010

---