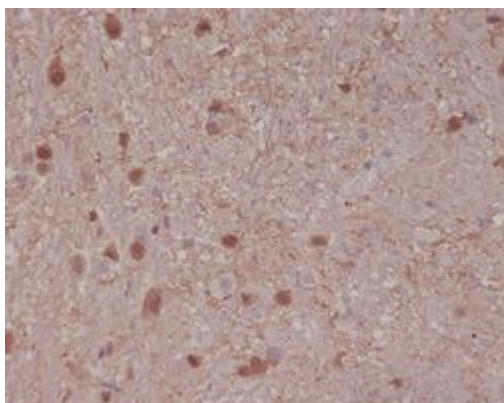
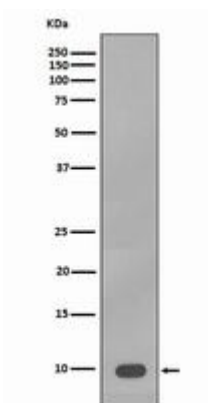


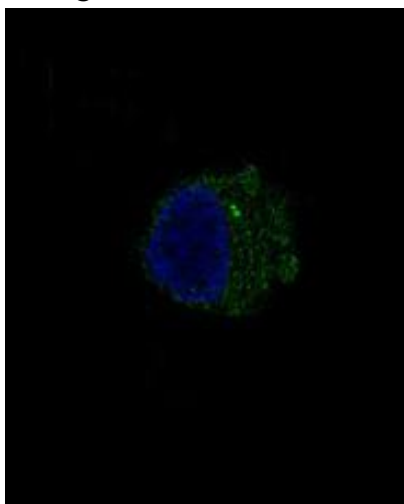
S100B RABBIT PAB**Cat.#:** N225578**Product Name:** Anti-S100B Rabbit pAb**Synonyms:** NEF; Protein S100 B; Protein S100-B; S 100 calcium binding protein beta chain; S 100 protein beta chain; S-100 protein beta chain; S-100 protein subunit beta; S100; S100 calcium binding protein beta (neural); S100 calcium-binding protein B; S100 protein beta chain; S100B; S100B_HUMAN; S100beta.**UNIPROT ID:** P04271**Background:** Despite their relatively small size (8-12 kDa) and uncomplicated architecture, S100 proteins regulate a variety of cellular processes such as cell growth and motility, cell cycle progression, transcription, and differentiation. To date, 25 members have been identified, including S100A1-S100A18, trichohyalin, filaggrin, repetin, S100P, and S100Z, making it the largest group in the EF-hand, calcium-binding protein family.**Immunogen:** A synthesized peptide derived from human S100B**Applications:** WB,IHC-P,ICC/IF,IP**Recommended Dilutions:** WB: 1/500-1/1000 IHC: 1/50-1/100 IF: 1/50-1/200 IP: 1/20**Host Species:** Rabbit**Clonality:** Rabbit Polyclonal**Clone ID:** -**MW:** Calculated MW: 11 kDa; Observed MW: 11 kDa**Isotype:** IgG**Purification:** Affinity Chromatography**Species Reactivity:** Human,Mouse,Rat,Goat**Conjugation:** Unconjugated**Modification:** Unmodified**Constituents:** PBS (without Mg²⁺ and Ca²⁺), pH 7.3 containing 50% glycerol, 0.5% BSA and 0.02% sodium azide**Research Areas:** Cell Biology**Storage & Shipping:** Store at -20°C. Avoid repeated freezing and thawing



Immunohistochemistry analysis of paraffin-embedded rat brain using S100B antibody. High-pressure and temperature Sodium A375 lysates using S100B antibody. Citrate pH 6.0 was used for antigen retrieval.



Western blot analysis of S100B in Sodium A375 lysates using S100B antibody.



Immunofluorescence analysis of S100B in A375 using S100B antibody.