

## S1PR4 RABBIT PAB

**Cat.#:** S214016

**Product Name:** Anti-S1PR4 Rabbit Polyclonal Antibody

**Synonyms:** EDG6; LPC1; SIP4; SLP4

**UNIPROT ID:** O95977 (Gene Accession - NP\_003766 )

**Background:** This gene is a member of the endothelial differentiation, G-protein-coupled (EDG)) receptor gene family. EDG receptors bind lysophospholipids or lysosphingolipids as ligands, and are involved in cell signalling in many different cell types. This EDG receptor gene is intronless and is specifically expressed in the lymphoid tissue.

**Immunogen:** Synthetic peptide of human S1PR4

**Applications:** ELISA, WB, IHC

**Recommended Dilutions:** IHC: 25-100;WB: 1000-5000;ELISA: 2000-5000

**Host Species:** Rabbit

**Clonality:** Rabbit Polyclonal

**Isotype:** Immunogen-specific rabbit IgG

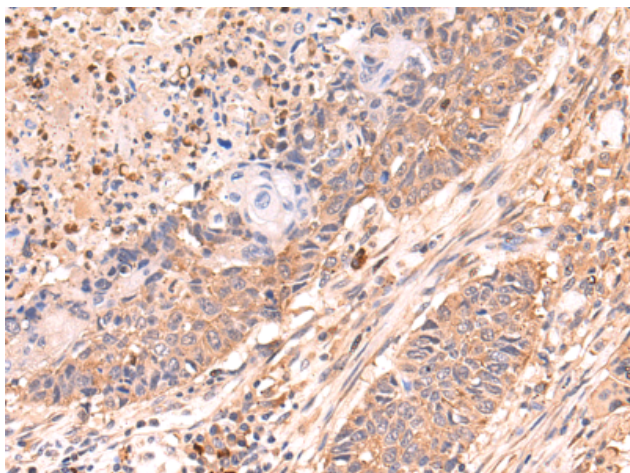
**Purification:** Antigen affinity purification

**Species Reactivity:** Human, Mouse, Rat

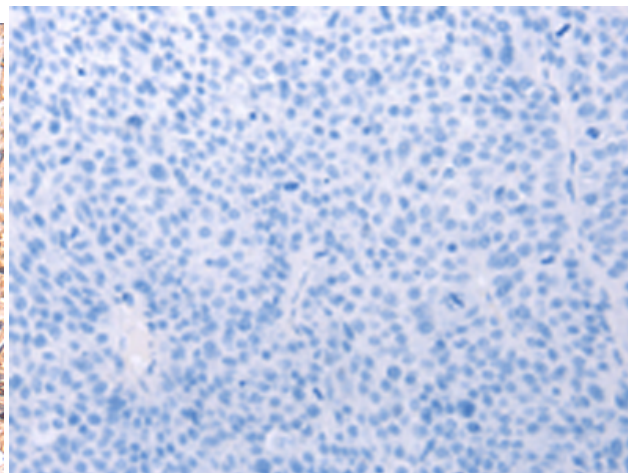
**Constituents:** PBS (without Mg<sup>2+</sup> and Ca<sup>2+</sup>), pH 7.4, 150 mM NaCl, 0.05% Sodium Azide and 40% glycerol

**Research Areas:** Metabolism, Signal Transduction, Cardiovascular

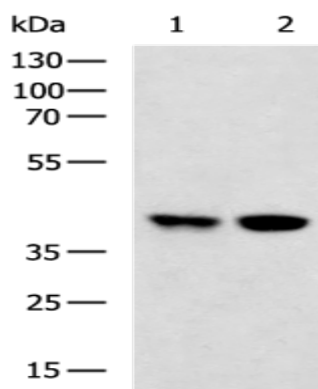
**Storage & Shipping:** Store at -20°C. Avoid repeated freezing and thawing



Immunohistochemistry analysis of paraffin embedded Human liver cancer tissue using 214016(SIPR4 Antibody) at a dilution of 1/40(Cytoplasm).



In comparison with the IHC on the left, the same paraffin-embedded Human liver cancer tissue is first treated with the synthetic peptide and then with 214016(Anti-SIPR4 Antibody) at dilution 1/40.



Gel: 8%SDS-PAGE, Lysate: 40 µg;  
Lane 1-2: Raji and Rat kidney tissue lysates;  
Primary antibody: 214016(SIPR4 Antibody) at dilution 1/1600;  
Secondary antibody: HRP-conjugated Goat anti rabbit IgG at 1/5000 dilution;  
Exposure time: 3 minutes