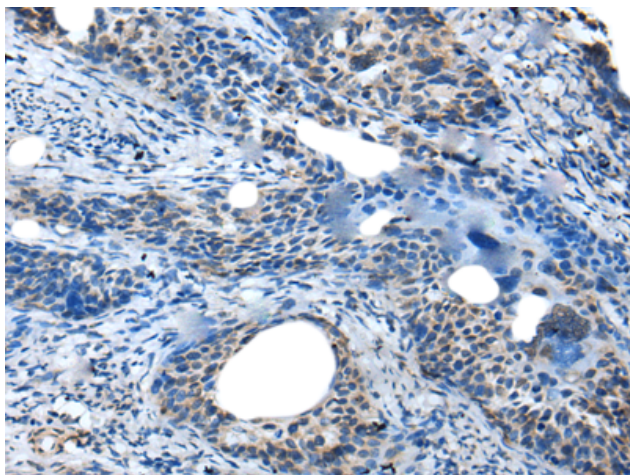


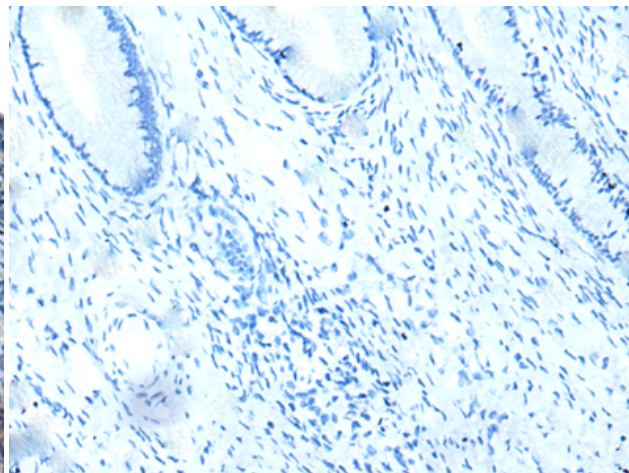
SAA4 RABBIT PAB**Cat.#:** S211524**Product Name:** Anti-SAA4 Rabbit Polyclonal Antibody**Synonyms:** CSAA; C-SAA**UNIPROT ID:** P35542 (Gene Accession - BC007026)

Background: SAA4 is a member of the SAA family. SAA proteins are family of apolipoproteins of high density lipoprotein (HDL). They can be separated into two distinct groups. First group (SAA1, SAA2, and SAA3) consists of acute phase reactant whose expression level increase in the blood in a response to trauma, infection, inflammation, and neoplasia. These acute phase SAAs associates with HDL during inflammation and remodel the HDL particle by displacing Apo-A1. The second distinct group consists of SAA4 and SAA5 which exist as the minor apolipoproteins on HDL, but this group of SAA constitutes more than 90% of all the SAA during homeostasis, and it is thought to play a role in the normal functioning of the HDL particle. SAA4 is a constitutively expressed protein which expressed only in humans and mice. It is connected almost completely with lipoproteins of the high density range. The physiological function of SAA4 is unknown, and its serum concentration has no association with those of other major apolipoproteins.

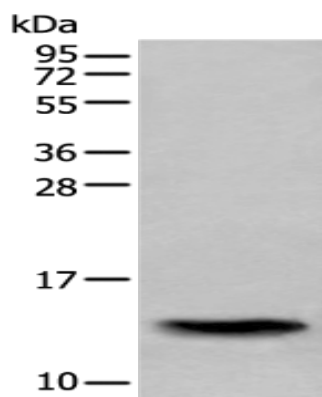
Immunogen: Full length fusion protein**Applications:** ELISA, WB, IHC**Recommended Dilutions:** IHC: 25-100; WB: 500-2000; ELISA: 5000-10000**Host Species:** Rabbit**Clonality:** Rabbit Polyclonal**Isotype:** Immunogen-specific rabbit IgG**Purification:** Antigen affinity purification**Species Reactivity:** Human**Constituents:** PBS (without Mg²⁺ and Ca²⁺), pH 7.4, 150 mM NaCl, 0.05% Sodium Azide and 40% glycerol**Research Areas:** Metabolism, Cardiovascular**Storage & Shipping:** Store at -20°C. Avoid repeated freezing and thawing



Immunohistochemistry analysis of paraffin embedded Human cervical cancer tissue using 211524 (SAA4 Antibody) at a dilution of 1/35 (Secreted).



In comparison with the IHC on the left, the same paraffin-embedded Human cervical cancer tissue is first treated with the fusion protein and then with 211524 (Anti-SAA4 Antibody) at dilution 1/35.



Gel: 12% SDS-PAGE, Lysate: 40 µg;
Lane: Human normal stomach tissue lysate;
Primary antibody: 211524 (SAA4 Antibody) at dilution 1/350;
Secondary antibody: Goat anti rabbit IgG at 1/8000 dilution;
Exposure time: 5 minutes