

SAE1 RABBIT MAB

Cat.#: N262864

Product Name: Anti-SAE1 Rabbit Monoclonal Antibody

Synonyms: SAE1; AOS1; SUA1; UBLE1A; SUMO-activating enzyme subunit 1; Ubiquitin-like 1-activating enzyme E1A

UNIPROT ID: Q9UBE0

Background: The heterodimer acts as a E1 ligase for SUMO1, SUMO2, SUMO3, and probably SUMO4. It mediates ATP-dependent activation of SUMO proteins followed by formation of a thioester bond between a SUMO protein and a conserved active site cysteine residue on UBA2/SAE2.

Immunogen: A synthetic peptide of human SAE1

Applications: WB, ICC/IF

Recommended Dilutions: WB: 1/500-1/1000 IF: 1/50-1/200

Host Species: Rabbit

Clonality: Rabbit Monoclonal

Clone ID: R02-013

MW: Calculated MW: 38 kDa; Observed MW: 38 kDa

Isotype: IgG

Purification: Affinity Purified

Species Reactivity: Human

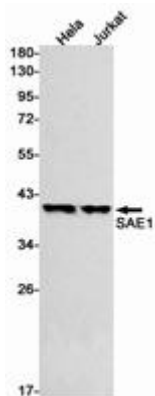
Conjugation: Unconjugated

Modification: Unmodified

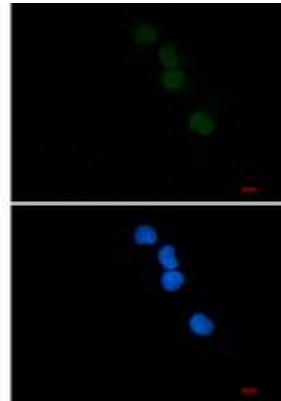
Constituents: PBS (without Mg²⁺ and Ca²⁺), pH 7.3 containing 50% glycerol, 0.5% BSA and 0.02% sodium azide

Research Areas: Cell Biology

Storage & Shipping: Store at -20°C. Avoid repeated freezing and thawing



Western blot analysis of SAE1 in HeLa, Jurkat lysates using SAE1 antibody.



Immunocytochemistry analysis of SAE1 (green) in HeLa using SAE1 antibody, and DAPI (blue).