

## SAE1 RABBIT MAB

**Cat.#:** N262863

**Product Name:** Anti-SAE1 Rabbit Monoclonal Antibody

**Synonyms:** SAE1; AOS1; SUA1; UBLE1A; SUMO-activating enzyme subunit 1; Ubiquitin-like 1-activating enzyme E1A

**UNIPROT ID:** Q9UBE0

**Background:** The heterodimer acts as a E1 ligase for SUMO1, SUMO2, SUMO3, and probably SUMO4. It mediates ATP-dependent activation of SUMO proteins followed by formation of a thioester bond between a SUMO protein and a conserved active site cysteine residue on UBA2/SAE2.

**Immunogen:** A synthetic peptide of human SAE1

**Applications:** WB, ICC/IF, IP

**Recommended Dilutions:** WB: 1/500-1/1000 IF: 1/50-1/200 IP: 1/20

**Host Species:** Rabbit

**Clonality:** Rabbit Monoclonal

**Clone ID:** R02-5E1

**MW:** Calculated MW: 38 kDa; Observed MW: 38 kDa

**Isotype:** IgG

**Purification:** Affinity Purified

**Species Reactivity:** Human

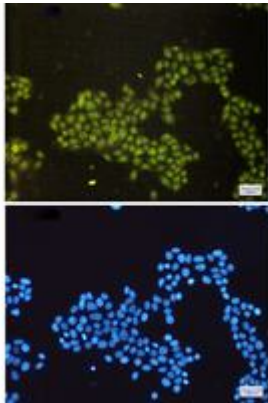
**Conjugation:** Unconjugated

**Modification:** Unmodified

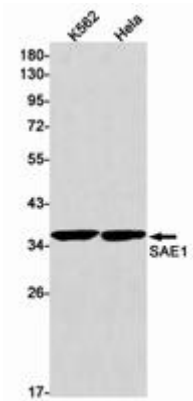
**Constituents:** PBS (without Mg<sup>2+</sup> and Ca<sup>2+</sup>), pH 7.3 containing 50% glycerol, 0.5% BSA and 0.02% sodium azide

**Research Areas:** Cell Biology

**Storage & Shipping:** Store at -20°C. Avoid repeated freezing and thawing



Immunocytochemistry analysis of SAE1 (green) in HeLa using SAE1 antibody, and DAPI (blue)



Western blot analysis of SAE1 in K562, HeLa lysates using SAE1 antibody.