

SAMD4B RABBIT PAB

Cat.#: S220874

Product Name: Anti-SAMD4B Rabbit Polyclonal Antibody

Synonyms: SMGB; hSmaug2

UNIPROT ID: Q5PRF9 (Gene Accession - NP_060498)

Background: SMGB; hSmaug2

Immunogen: Synthetic peptide of human SAMD4B

Applications: ELISA, IHC

Recommended Dilutions: IHC: 25-100; ELISA: 1000-2000

Host Species: Rabbit

Clonality: Rabbit Polyclonal

Isotype: Immunogen-specific rabbit IgG

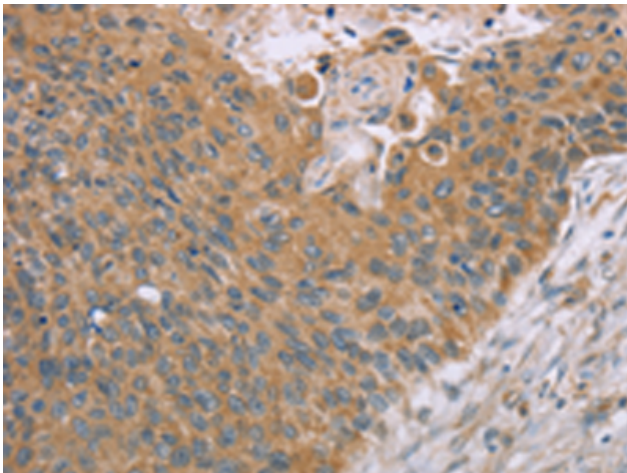
Purification: Antigen affinity purification

Species Reactivity: Human, Mouse

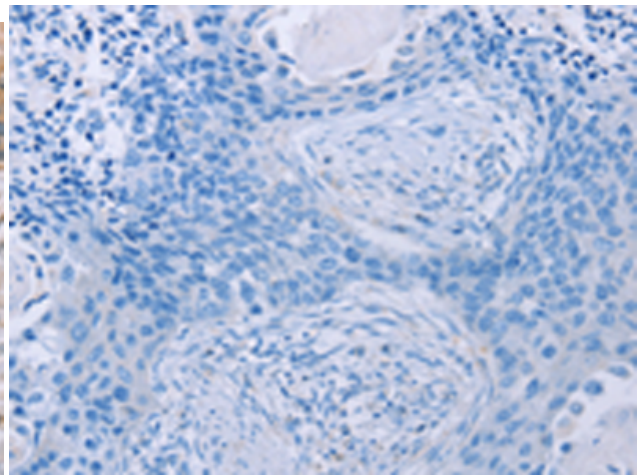
Constituents: PBS (without Mg²⁺ and Ca²⁺), pH 7.4, 150 mM NaCl, 0.05% Sodium Azide and 40% glycerol

Research Areas: Cell Biology

Storage & Shipping: Store at -20°C. Avoid repeated freezing and thawing



Immunohistochemistry analysis of paraffin embedded Human esophagus cancer tissue using 220874(SAMD4B Antibody) at a dilution of 1/40(Cytoplasm).



In comparison with the IHC on the left, the same paraffin-embedded Human esophagus cancer tissue is first treated with the synthetic peptide and then with 220874(Anti-SAMD4B Antibody) at dilution 1/40.