

SAMM50 RABBIT PAB

Cat.#: S218729

Product Name: Anti-SAMM50 Rabbit Polyclonal Antibody

Synonyms: OMP85; SAM50; TOB55; TRG-3; CGI-51; YNL026W

UNIPROT ID: Q9Y512 (Gene Accession - BC011681)

Background: This gene encodes a component of the Sorting and Assembly Machinery (SAM) of the mitochondrial outer membrane. The Sam complex functions in the assembly of beta-barrel proteins into the outer mitochondrial membrane.

Immunogen: Fusion protein of human SAMM50

Applications: ELISA, IHC

Recommended Dilutions: IHC: 25-100; ELISA: 5000-10000

Host Species: Rabbit

Clonality: Rabbit Polyclonal

Isotype: Immunogen-specific rabbit IgG

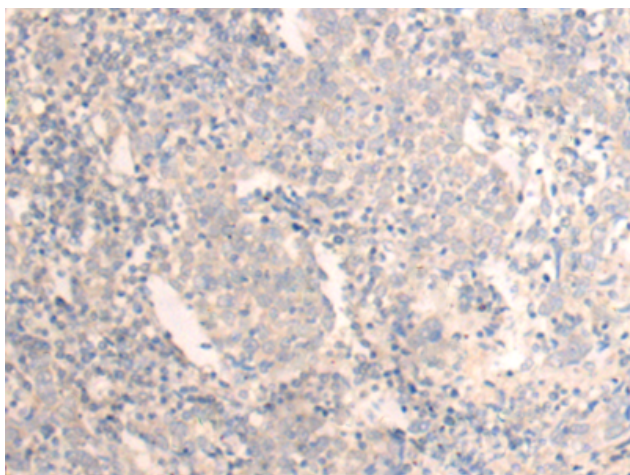
Purification: Antigen affinity purification

Species Reactivity: Human, Mouse, Rat

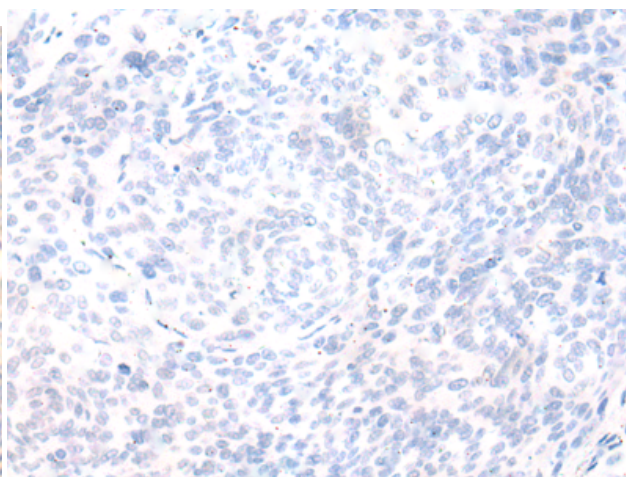
Constituents: PBS (without Mg²⁺ and Ca²⁺), pH 7.4, 150 mM NaCl, 0.05% Sodium Azide and 40% glycerol

Research Areas: Metabolism

Storage & Shipping: Store at -20°C. Avoid repeated freezing and thawing



Immunohistochemistry analysis of paraffin embedded Human cervical cancer tissue using 218729(SAMM50 Antibody) at a dilution of 1/20(Cytoplasm).



In comparison with the IHC on the left, the same paraffin-embedded Human cervical cancer tissue is first treated with the fusion protein and then with 218729(Anti-SAMM50 Antibody) at dilution 1/20.