

SAP30L RABBIT PAB

Cat.#: S219234

Product Name: Anti-SAP30L Rabbit Polyclonal Antibody

Synonyms: NS4ATP2

UNIPROT ID: Q9HAJ7 (Gene Accession - BC009829)

Background: Involved in the functional recruitment of the class I Sin3-histone deacetylase complex (HDAC) to the nucleolus.

Immunogen: Fusion protein of human SAP30L

Applications: ELISA, IHC

Recommended Dilutions: IHC: 100-200; ELISA: 5000-10000

Host Species: Rabbit

Clonality: Rabbit Polyclonal

Isotype: Immunogen-specific rabbit IgG

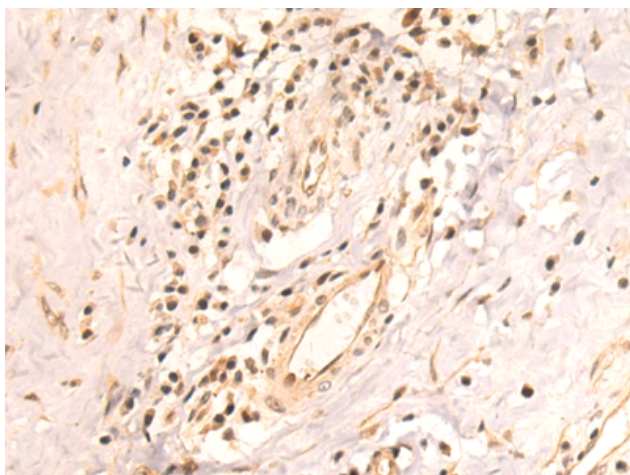
Purification: Antigen affinity purification

Species Reactivity: Human, Mouse

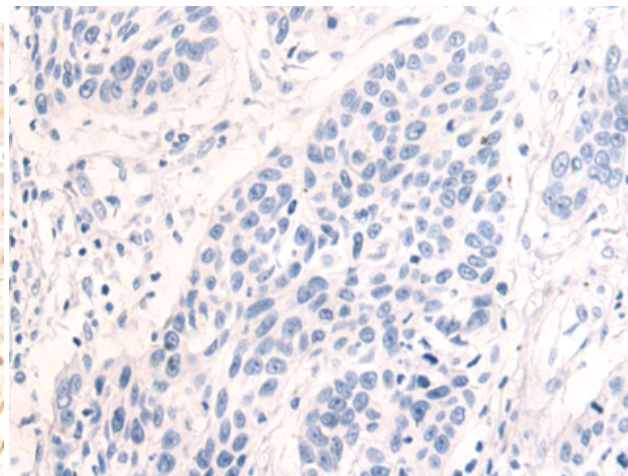
Constituents: PBS (without Mg²⁺ and Ca²⁺), pH 7.4, 150 mM NaCl, 0.05% Sodium Azide and 40% glycerol

Research Areas: Epigenetics and Nuclear Signaling

Storage & Shipping: Store at -20°C. Avoid repeated freezing and thawing



Immunohistochemistry analysis of paraffin embedded Human esophagus cancer tissue using 219234(SAP30L Antibody) at a dilution of 1/115(Nucleus).



In comparison with the IHC on the left, the same paraffin-embedded Human esophagus cancer tissue is first treated with the fusion protein and then with 219234(Anti-SAP30L Antibody) at dilution 1/115.