

## SARA RABBIT MAB

**Cat.#:** N263540

**Product Name:** Anti-SARA Rabbit Monoclonal Antibody

**Synonyms:** NSP; SARA; MADHIP; SMADIP; PPP1R173

**UNIPROT ID:** O95405

**Background:** Early endosomal protein that functions to recruit SMAD2/SMAD3 to intracellular membranes and to the TGF-beta receptor.

**Immunogen:** A synthetic peptide of human SARA

**Applications:** WB,IHC-P,IP

**Recommended Dilutions:** WB: 1/500-1/1000 IHC: 1/50-1/100 IP: 1/20

**Host Species:** Rabbit

**Clonality:** Rabbit Monoclonal

**Clone ID:** R01-0A4

**MW:** Calculated MW: 156 kDa; Observed MW: 156 kDa

**Isotype:** IgG

**Purification:** Affinity Purified

**Species Reactivity:** Human

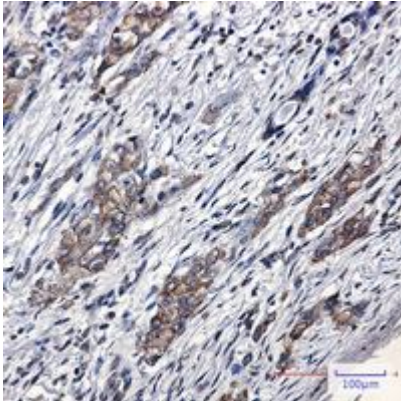
**Conjugation:** Unconjugated

**Modification:** Unmodified

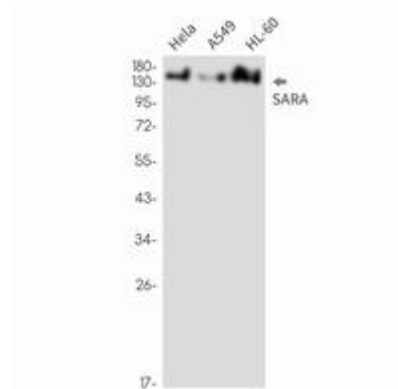
**Constituents:** PBS (without Mg<sup>2+</sup> and Ca<sup>2+</sup>), pH 7.3 containing 50% glycerol, 0.5% BSA and 0.02% sodium azide

**Research Areas:** Signal Transduction

**Storage & Shipping:** Store at -20°C. Avoid repeated freezing and thawing



Immunohistochemistry analysis of paraffin-embedded Human lung cancer using SARA antibody. High-pressure and temperature Sodium Citrate pH 6.0 was used for antigen retrieval.



Western blot analysis of SARA in HeLa, A549, HL-60 lysates using SARA antibody.