

## SARCOMERIC ALPHA ACTININ RABBIT MAB

**Cat.#:** N262868

**Product Name:** Anti-Sarcomeric alpha Actinin Rabbit Monoclonal Antibody

**Synonyms:** Actin binding protein; Actinin alpha 2; ACTN2; Alpha actinin 2; CMD1AA

**UNIPROT ID:** P35609

**Background:** F-actin cross-linking protein which is thought to anchor actin to a variety of intracellular structures. This is a bundling protein.

**Immunogen:** A synthetic peptide of human Sarcomeric Alpha Actinin

**Applications:** WB,IHC-P,IP

**Recommended Dilutions:** WB: 1/500-1/1000 IHC: 1/50-1/100 IP: 1/20

**Host Species:** Rabbit

**Clonality:** Rabbit Monoclonal

**Clone ID:** R05-7J8

**MW:** Calculated MW: 104 kDa; Observed MW: 104 kDa

**Isotype:** IgG

**Purification:** Affinity Purified

**Species Reactivity:** Human,Mouse,Rat

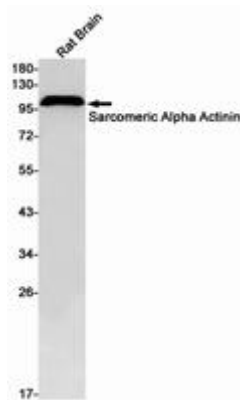
**Conjugation:** Unconjugated

**Modification:** Unmodified

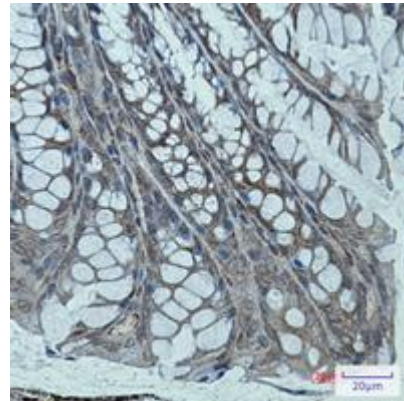
**Constituents:** PBS (without Mg<sup>2+</sup> and Ca<sup>2+</sup>), pH 7.3 containing 50% glycerol, 0.5% BSA and 0.02% sodium azide

**Research Areas:** Signal Transduction

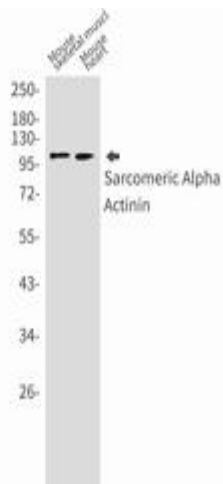
**Storage & Shipping:** Store at -20°C. Avoid repeated freezing and thawing



Western blot analysis of Sarcomeric Alpha Actinin in rat Brain lysates using Sarcomeric Alpha Actinin antibody



Immunohistochemistry analysis of paraffin-embedded mouse colon using Sarcomeric alpha Actinin antibody. High-pressure and temperature Sodium Citrate pH 6.0 was used for antigen retrieval.



Western blot analysis of Sarcomeric Alpha Actinin in mouse skeletal muscle, mouse heart lysates using Sarcomeric Alpha Actinin antibody.