

SARCOMERIC ALPHA ACTININ RABBIT PAB

Cat.#: N225775

Product Name: Anti-Sarcomeric alpha Actinin Rabbit pAb

Synonyms: Actin binding protein; Actinin alpha 2; ACTN2; Alpha actinin 2; CMD1AA

UNIPROT ID: P35609

Background: F-actin cross-linking protein which is thought to anchor actin to a variety of intracellular structures. This is a bundling protein.

Immunogen: A synthesized peptide derived from human ACTN2

Applications: WB,IHC-P,IP

Recommended Dilutions: WB: 1/500-1/1000 IHC: 1/50-1/100 IP: 1/20

Host Species: Rabbit

Clonality: Rabbit Polyclonal

Clone ID: -

MW: Calculated MW: 104 kDa; Observed MW: 104 kDa

Isotype: IgG

Purification: Affinity Chromatography

Species Reactivity: Human,Mouse,Rat

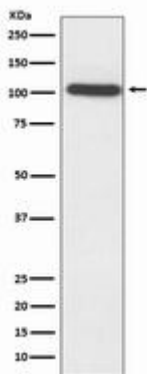
Conjugation: Unconjugated

Modification: Unmodified

Constituents: PBS (without Mg²⁺ and Ca²⁺), pH 7.3 containing 50% glycerol, 0.5% BSA and 0.02% sodium azide

Research Areas: Signal Transduction

Storage & Shipping: Store at -20°C. Avoid repeated freezing and thawing



Western blot analysis of ACTN2 in HepG2 lysates using Sarcomeric alpha Actinin antibody.



Product Description

Pioneering GTPase and Oncogene Product Development since 2010
